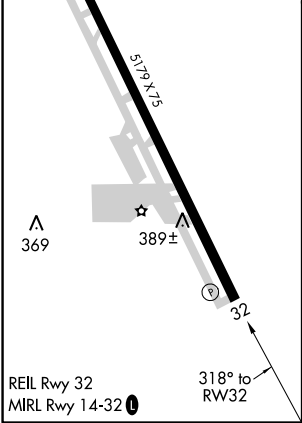
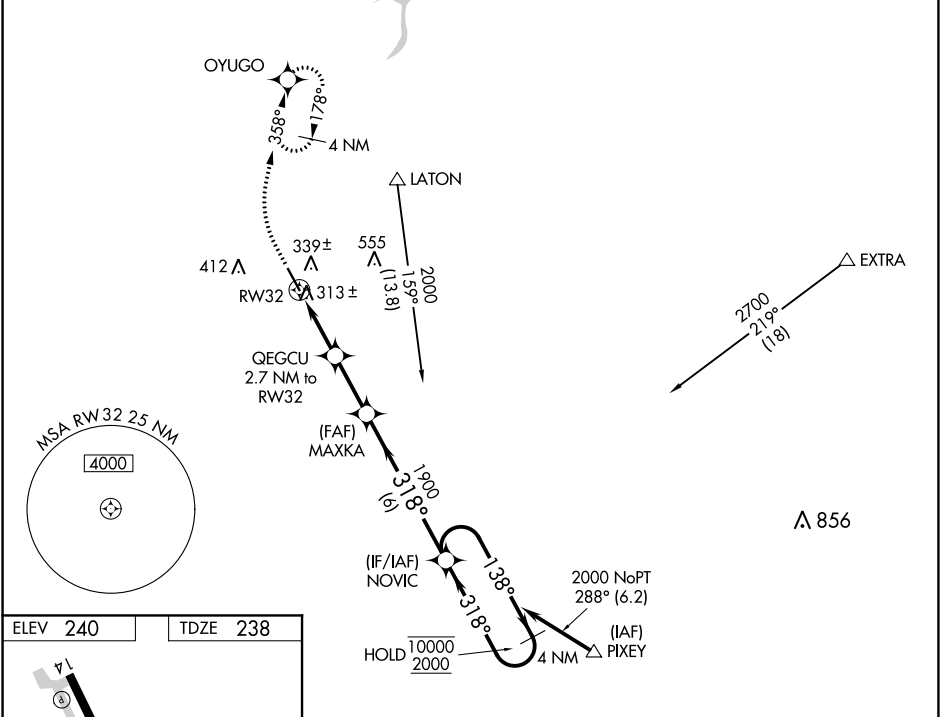


WAAS CH 70344 W32A	APP CRS 318°	Rwy Idg TDZE Apt Elev	5179 238 240
--	------------------------	-----------------------------	---

RNAV (GPS) RWY 32
HANFORD MUNI (HJO)

RNP APCH.	MISSED APPROACH: Climb to 700 then climbing right turn to 2000 direct OYUGO and hold, continue climb-in-hold to 2000.
Rwy 32 helicopter visibility reduction below ¾ SM NA. For uncompensated Baro-VNAV systems, LNAV/VNAV NA below -3°C or above 54°C.	

ASOS 134.75	FRESNO APP CON 123.9	CLNC DEL 123.9	UNICOM 122.8 (CTAF)
-----------------------	--------------------------------	--------------------------	-------------------------------



700	2000	OYUGO	VGSI and RNAV glidepath not coincident (VGSI Angle 3.00/TCH 25).		
*LNAV only.		QEGCU 2.7 NM to RW32	NOVIC	4 NM Holding Pattern	
*1 NM to RW32		MAXKA 1900	138° → 10000 ← 318° 2000		
				GP 3.00° TCH 50	
CATEGORY		A	B	C	D
LPV	DA	488-¾ 250 (300-¾)			NA
LNAV/ VNAV	DA	488-¾ 250 (300-¾)			NA
LNAV	MDA	580-1 342 (400-1)		580-1½ 342 (400-1½)	NA

SW-2, 31 DEC 2020 to 28 JAN 2021

SW-2, 31 DEC 2020 to 28 JAN 2021