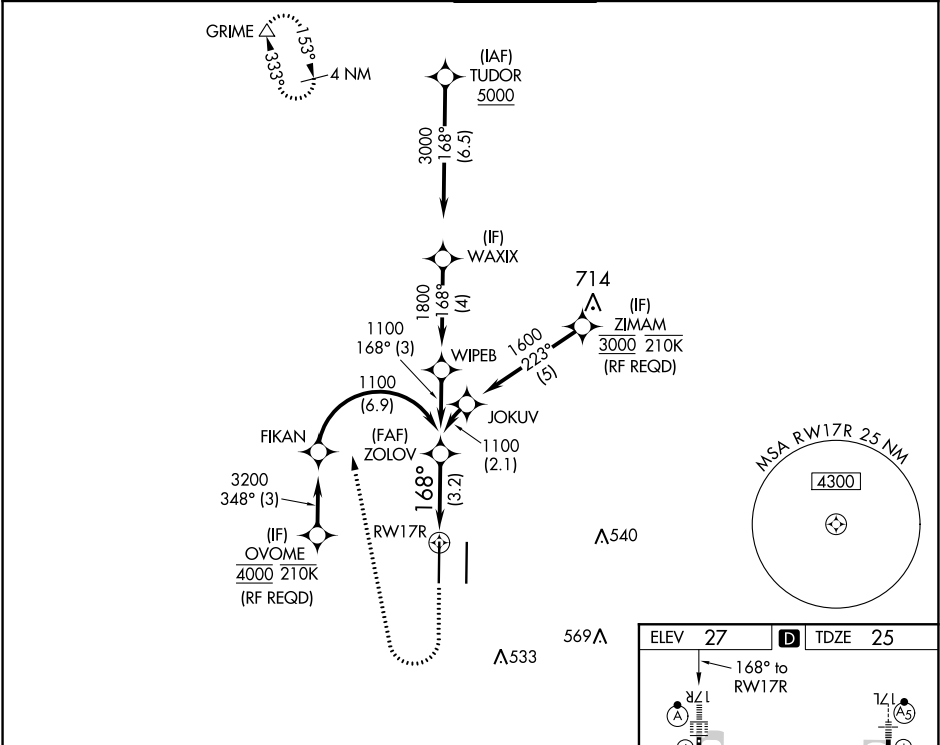


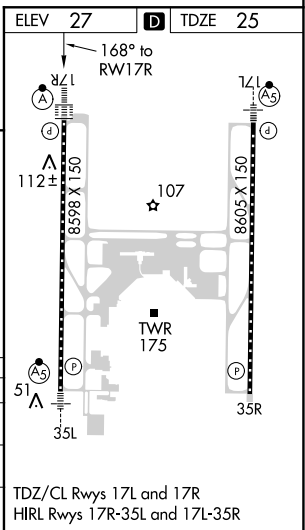
APP CRS	Rwy Idg	8598
168°	TDZE	25
	Apt Elev	27

RNAV (RNP) Z RWY 17R
SACRAMENTO INTL (SMF)

RNP AR APCH.		ALSIF-2	MISSED APPROACH: Climb to 500 then climbing right turn to 2000 direct GRIME and hold.		
▼ For uncompensated Baro-VNAV systems, procedure NA below -4°C or above 54°C. For inop ALS, increase RNP 0.10 all Cats visibility to RVR 4500 and RNP 0.30 all Cats visibility to RVR 6000.					
D-ATIS	NORCAL APP CON	CAPITOL TOWER	GND CON	CLNC DEL	CPDLC
126.75	125.4 259.1 (W-NE) 125.25 257.9 (SW) 127.4 317.5 (E-SE)	125.7 256.7	121.7 256.7	121.1 256.7	



500	2000	GRIME	VGSI and RNAV glidepath not coincident (VGSI Angle 3.00/TCH 72).			
CATEGORY	A	B	C	D		
RNP 0.10 DA	323/24 298 (300-½)					
RNP 0.30 DA	388/40 363 (400-¾)					
AUTHORIZATION REQUIRED						



SW-2, 31 DEC 2020 to 28 JAN 2021

SW-2, 31 DEC 2020 to 28 JAN 2021