

LOC/DME I-MDK <b>111.75</b> Chan <b>54</b> (Y)	APP CRS <b>168°</b>	Rwy Idg <b>8605</b> TDZE <b>27</b> Apt Elev <b>27</b>	ILS or LOC RWY 17L SACRAMENTO INTL(SMF)
--	------------------------	---	--

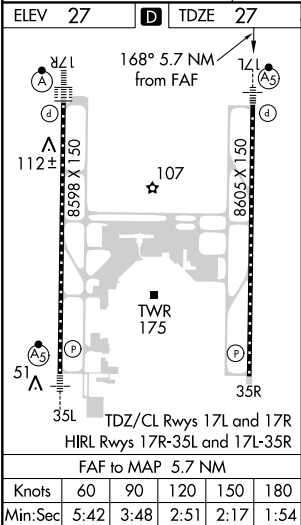
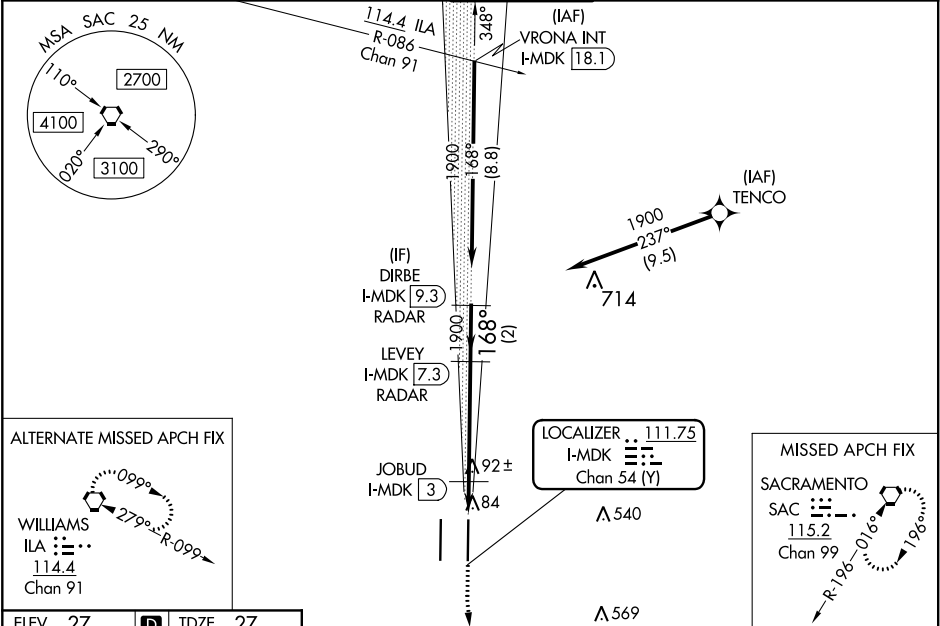
RNAV 1-GPS or RADAR required for procedure entry.  
From TENCO: RNAV 1-GPS required. DME or RADAR required.

Simultaneous approach authorized. Circling NA west of Rwy 17L-35R.  
For inop ALS, increase S-LOC 17L Cat C/D visibility to 1 $\frac{3}{8}$  SM and S-LOC 17L JOBUD fix minimums Cat C/D visibility to RVR 4500.

MALSR

MISSED APPROACH: Climb to 500 then climbing left turn to 3000 direct SAC VORTAC and hold.

D-ATIS <b>126.75</b>	NORCAL APP CON (W-NE) <b>125.25 257.9</b> (SW) <b>127.4 317.5</b> (E-SE)	CAPITOL TOWER <b>125.7 256.7</b>	GND CON <b>121.7 256.7</b>	CLNC DEL <b>121.1 256.7</b>	CPDLC
-------------------------	--	-------------------------------------	-------------------------------	--------------------------------	-------



CATEGORY	A	B	C	D
S-ILS 17L	227/18 200 (200- $\frac{1}{2}$ )			
S-LOC 17L	500/24	473 (500- $\frac{1}{2}$ )	500/50	473 (500-1)
CIRCLING	500-1	473 (500-1)	500-1 $\frac{1}{2}$ 473 (500-1 $\frac{1}{2}$ )	840-2 $\frac{3}{4}$ 813 (900-2 $\frac{3}{4}$ )
JOBUD FIX MINIMUMS (DME REQUIRED)				
S-LOC 17L	340/24 313 (400- $\frac{1}{2}$ )			
CIRCLING	400-1 373 (400-1)	480-1 453 (500-1)	480-1 $\frac{1}{2}$ 453 (500-1 $\frac{1}{2}$ )	840-2 $\frac{3}{4}$ 813 (900-2 $\frac{3}{4}$ )