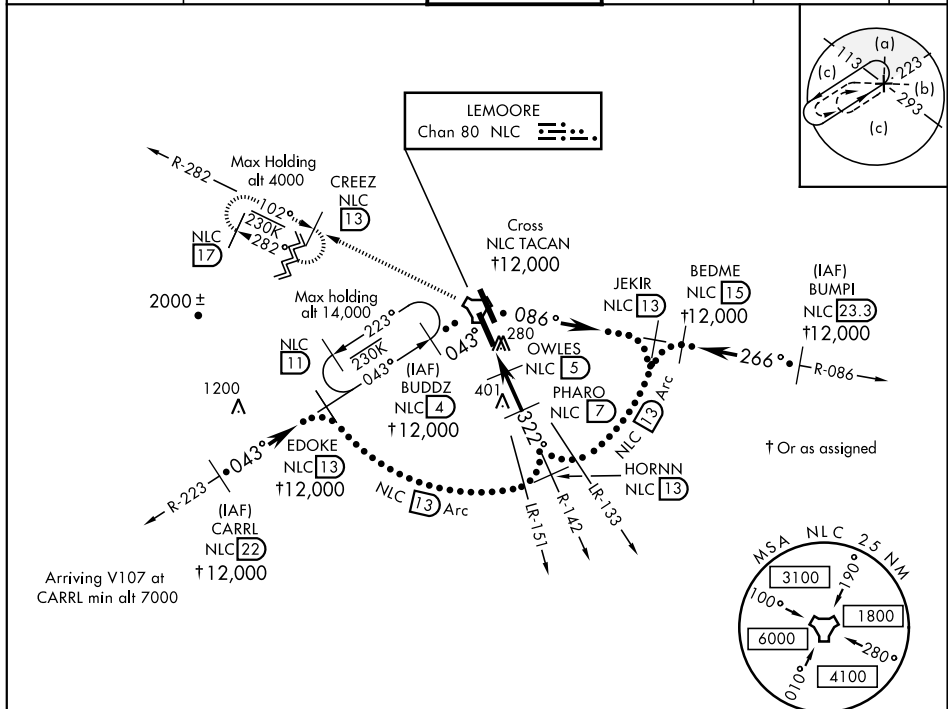


HI-TACAN Y RWY 32L

TACAN NLC Chan 80	APCH CRS 322°	Rwy ldg 13,501 TDZE 228 Arprt Elev 229	JAL-5067 [USN]	LEMOORE NAS (REEVES FIELD) (KNLC)
----------------------	------------------	---	----------------	-----------------------------------

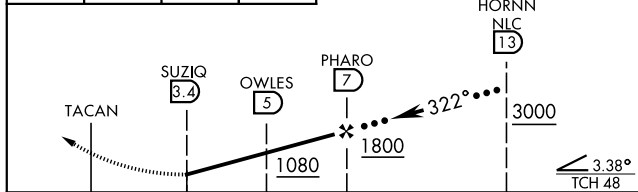
V * When ALS inop, increase CAT CDE RVR to 55 and vis to 1 mile.	ALS-F-2 	MISSED APPROACH: Climb to 3000 via R-142 to NLC TACAN, then via R-282 to CREEZ and hold.
--	--------------------	---

ATIS * 121.575 327.15	LEMOORE APP CON N 124.1 S 118.15 269.025	LEMOORE TOWER * 128.3 340.2	GND CON 121.65 305.2	CLNC DEL 124.1 371.9	ASR/ PAR
--	---	--	---------------------------------------	---------------------------------------	-----------------

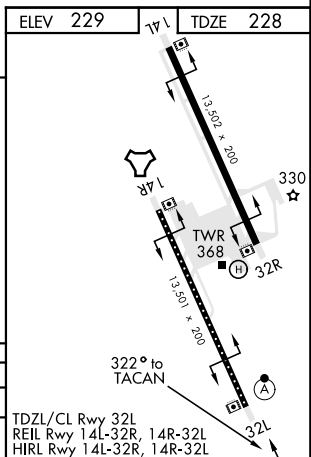


EMERG SAFE ALT 100 NM 16,500

3000 ↑ NLC R-142	NLC 	CREEZ NLC R-282	CREEZ NLC 13
---------------------------	---------	-----------------------	--------------------



CATEGORY	C	D	E
S-32L *	540/24	312 (400-1/2)	
CIRCLING	680-1 1/2 451 (500-1 1/2)	780-2 551 (600-2)	



LEMOORE, CALIFORNIA

36°20'N-119°57'W

LEMOORE NAS (REEVES FIELD) (KNLC)

Amdt 5 24MAY18

HI-TACAN Y RWY 32L