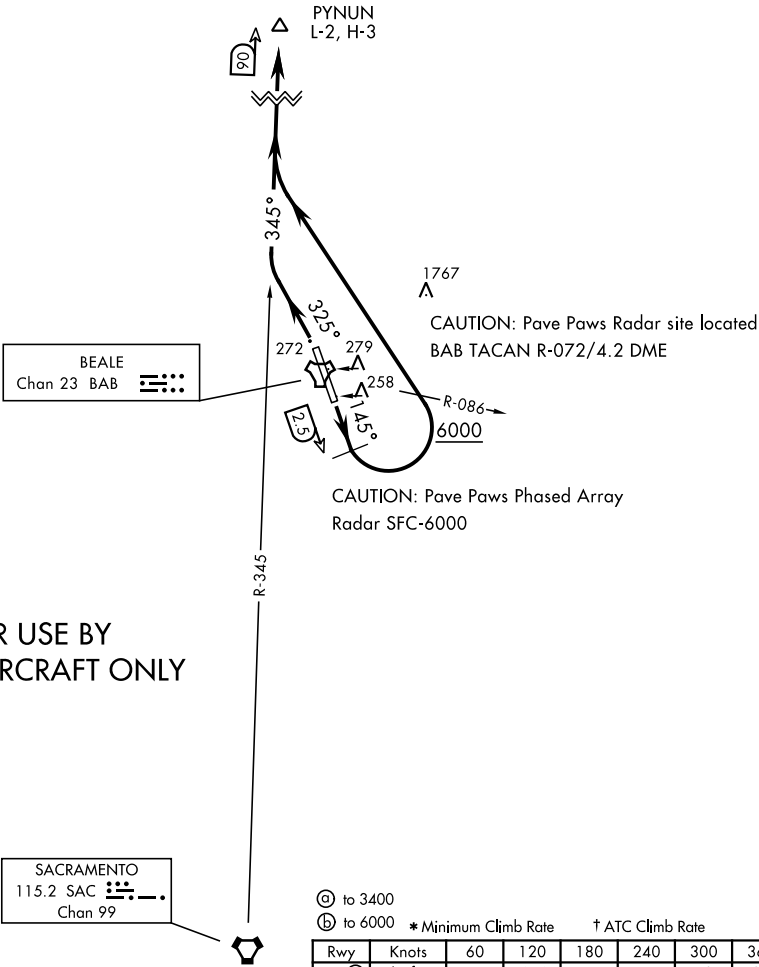


ATIS ★  
124.55 273.5  
GND CON  
121.6 257.75  
BEALE TOWER ★  
119.4 284.75  
NORCAL DEP CON  
125.4 259.1

SHL-771 [USAF]

6768



FOR USE BY  
9 RW AIRCRAFT ONLY

DEPARTURE ROUTE DESCRIPTION

TAKE-OFF RWY 15: Fly heading 145° until BAB TACAN 2.5 DME, turn left intercept SAC VORTAC R-345 to PYNUN. Cross BAB R-086 at or above 6000. Then via assigned route.

TAKE-OFF RWY 33: Fly heading 325° intercept SAC VORTAC R-345 to PYNUN. Then via assigned route.