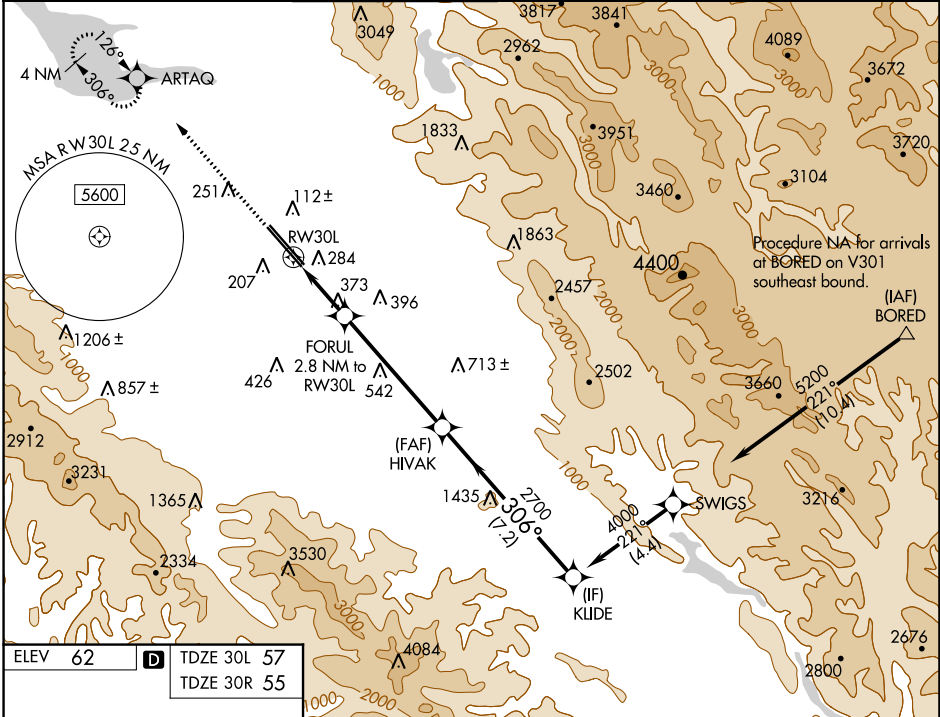


WAAS CH <b>97306</b> <b>W30A</b>	APP CRS <b>306°</b>	30L Rwy Idg <b>7614</b> TDZE <b>57</b> Apt Elev <b>62</b>	30R Rwy Idg <b>7597</b> TDZE <b>55</b> Apt Elev <b>62</b>
--	------------------------	--	--

RNAV (GPS) Y RWY 30L  
NORMAN Y MINETA SAN JOSE INTL (SJC)

For uncompensated Baro-VNAV systems, LNAV/VNAV NA below -1°C (31°F) or above 54°C (130°F). DME/DME RNP-0.3 NA. # RVR 1800 authorized with use of FD or AP or HUD to DA.				MAISR Rwy 30L 	MISSED APPROACH: Climb to 2300 direct ARTAQ and hold.	
D-ATIS <b>126.95</b>	NORCAL APP CON <b>120.1 290.25</b>	SAN JOSE TOWER ★ <b>124.0 (CTAF) 0 257.6</b>		GND CON <b>121.7</b>	CLNC DEL <b>118.0</b>	UNICOM <b>122.95</b>



ELEV 62 <b>D</b> TDZE 30L 57 TDZE 30R 55		2300 ARTAQ VGSI and RNAV glidepath not coincident (VGSI Angle 3.00/TCH 70).		KLIDE	
		* LNAV only FORUL 2.8 NM to RW30L * 1.6 NM to RW30L		HIVAK 2700 306° 2700 4000 GP 3.00° TCH 54	
CATEGORY		A		B	
LPV DA #		257/24		200 (200-½)	
LNAV/VNAV DA		540/60		483 (500-1¼)	
LNAV MDA		640/24		583 (600-½)	
SIDESTEP 30R		640-1		585 (600-1)	