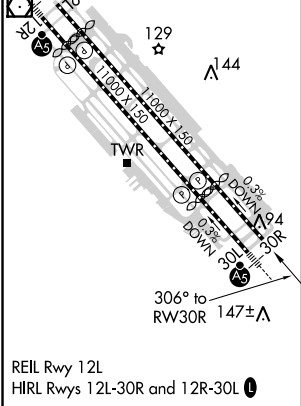
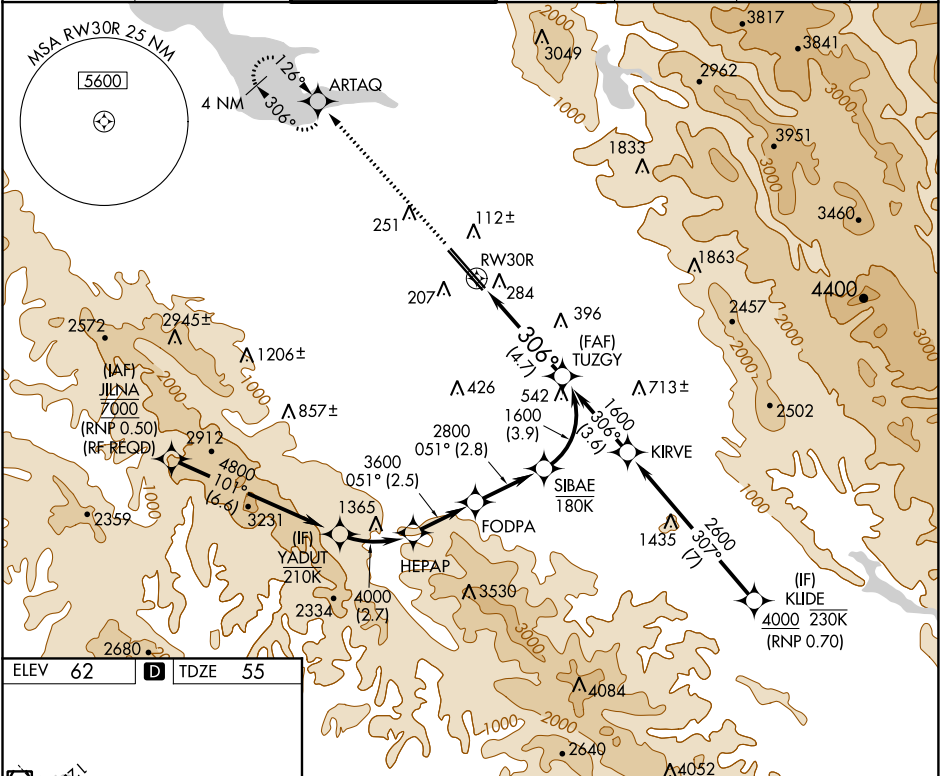


APP CRS	Rwy Idg	7597
306°	TDZE	55
	Apt Elev	62

RNAV (RNP) Z RWY 30R
NORMAN Y MINETA SAN JOSE INTL (SJC)

For uncompensated Baro-VNAV systems, procedure NA below -1°C (31°F) or above 54°C (130°F). GPS required.				MISSED APPROACH: Climb to 600 then climb to 2300 direct ARTAQ and hold.		
--	--	--	--	---	--	--

D-ATIS	NORCAL APP CON	SAN JOSE TOWER ★	GND CON	CLNC DEL	CPDLC	UNICOM
126.95	120.1 290.25	124.0 (CTAF) 0 257.6	121.7	118.0		122.95



600	2300	ARTAQ	VGSI and RNAV glidepath not coincident (VGSI Angle 3.00/TCH 69°).	TUZGY
↑	↑	★		1600
See planview for multiple IF locations.				
GP 3.00° TCH 55				
4.7 NM				
CATEGORY	A	B	C	D
RNP 0.11 DA		404-1 1/8	349 (400-1 1/8)	
RNP 0.20 DA		475-1 3/8	420 (500-1 3/8)	
RNP 0.30 DA		541-1 5/8	486 (500-1 5/8)	
AUTHORIZATION REQUIRED				