

APP CRS	Rwy Idg	7614
306°	TDZE	57
	Apt Elev	62

RNAV (RNP) Z RWY 30L

NORMAN Y MINETA SAN JOSE INTL (SJC)

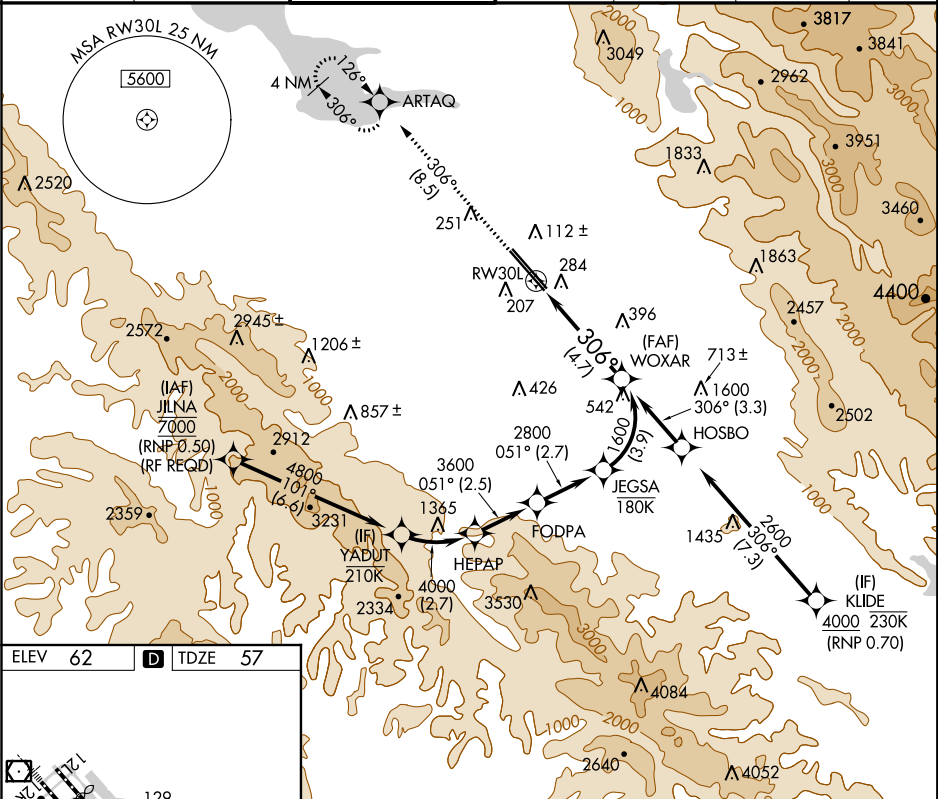
▼

For uncompensated Baro-VNAV systems, procedure NA below -1°C (31°F) or above 54°C (130°F). GPS required. For inoperative MALSR, increase RNP 0.15 all Cats visibility to RVR 6000 and increase RNP 0.30 all Cats visibility to 1½ mile.

MALSR

MISSED APPROACH: Climb to 2300 on track 306° to ARTAQ and hold.

D-ATIS	NORCAL APP CON	SAN JOSE TOWER ★	GND CON	CLNC DEL	CPDLC	UNICOM
126.95	120.1 290.25	124.0 (CTAF) 257.6	121.7	118.0		122.95



ELEV 62

D

TDZE 57

REIL Rwy 12L

HIRL Rwy 12L-30R and 12R-30L

2300

ARTAQ

VGSI and RNAV glidepath not coincident (VGSI Angle 3.00/TCH 70).

WOXAR

tr 306°

See planview for multiple IF locations.

RW30L

306°

1600

GP 3.00°

TCH 54

CATEGORY	A	B	C	D
RNP 0.15 DA	421/40	364 (400-¾)		
RNP 0.30 DA	544/60	487 (500-1¼)		

AUTHORIZATION REQUIRED