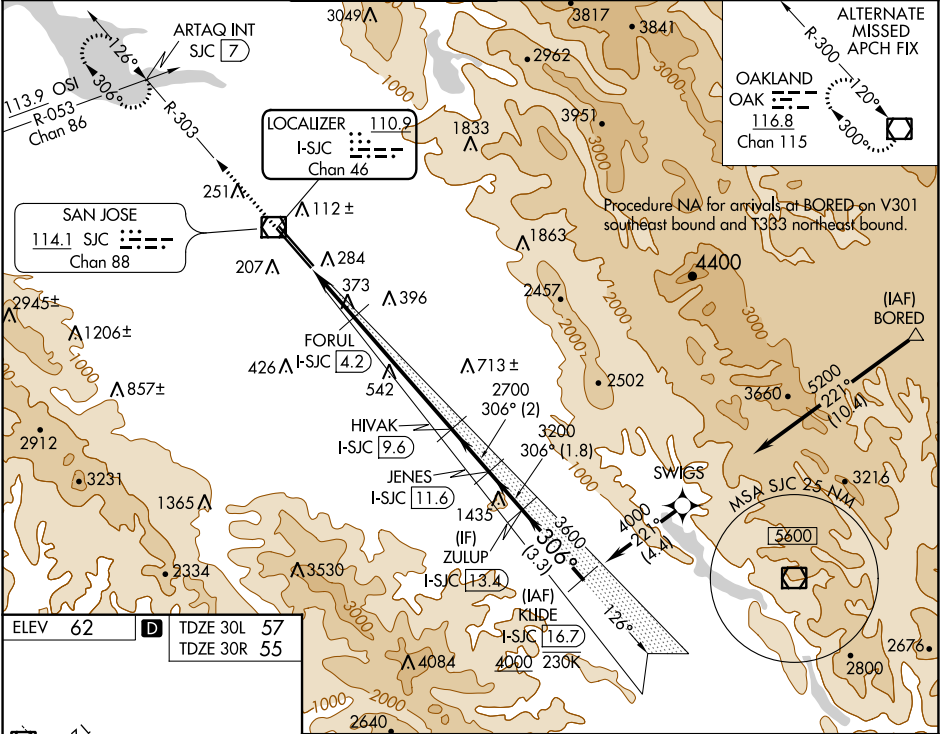


LOC/DME I-SJC	APP CRS	Rwy Idg	30L	30R
110.9	306°	7614	7597	
Chan 46		TDZE	57	55
		Apt Elev	62	62

ILS or LOC RWY 30L
NORMAN Y MINETA SAN JOSE INTL (SJC)

RNAV 1-GPS or RADAR required for procedure entry. DME required. From BORED: RNAV 1-GPS required.		MALSR Rwy 30L	MISSED APPROACH: Climb to 1900 on SJC VOR/DME R-303 to ARTAQ INT/SJC 7 DME and hold.
# RVR 1800 authorized with use of FD or AP or HUD to DA.			

D-ATIS 126.95	NORCAL APP CON 120.1 290.25	SAN JOSE TOWER ★ 124.0 (CTAF) 0 257.6	GND CON 121.7	CLNC DEL 118.0	CPDLC	UNICOM 122.95
-------------------------	---------------------------------------	---	-------------------------	--------------------------	-------	-------------------------



<p>REIL Rwy 12L HIRL Rwy 12L-30R and 12R-30L</p>	VGS1 and ILS glidepath not coincident (VGS1 Angle 3.00/TCH 70).				
	SJC R-303 *LOC only				
	FORUL I-SJC 4.2				
	HIVAK I-SJC 9.6				
	JENES I-SJC 11.6				
ZULUP I-SJC 13.4					
KLIDE I-SJC 16.7					
306° 4000					
GS 3.00° TCH 54					
CATEGORY	A		B	C	D
S-ILS 30L#	257/24 200 (200-½)				
S-LOC 30L	640/24 583 (600-½)		640-1¼ 583 (600-1¼)		
SIDESTEP 30R	640-1 585 (600-1)		640-1¾ 585 (600-1¾)		640-2 585 (600-2)