


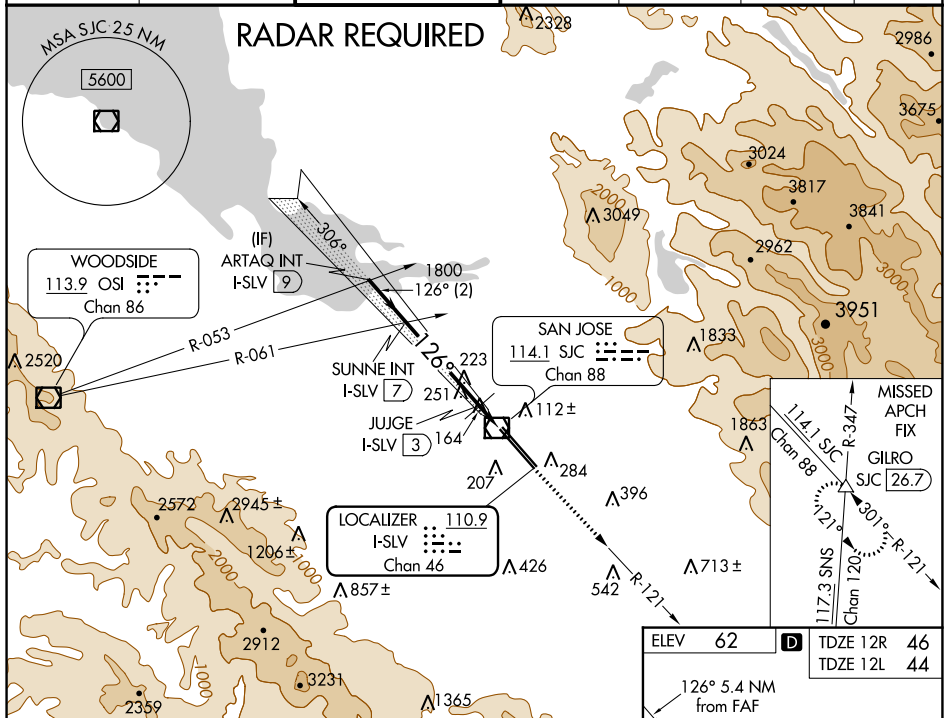
LOC/DME I-SLV	APP CRS	Rwy Idg	12R 8587	12L 8831
<u>110.9</u>	126°	TDZE	46	44
Chan 46		Apt Elev	62	62

ILS or LOC RWY 12R

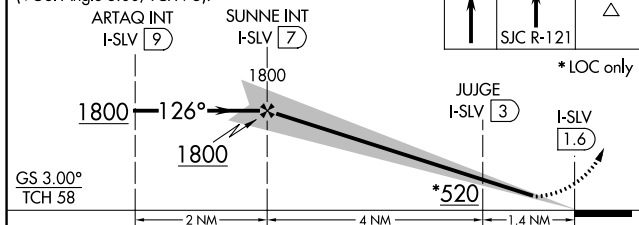
NORMAN Y MINETA SAN JOSE INTL (SJC)

<p>V A</p> <p>DME required. For inoperative MALSR, increase S-LOC 12R Cat C/D visibility to 1 mile.</p>	<p>MALSR Rwy 12R</p> 	<p>MISSED APPROACH: Climb to 500 then climb to 4000 on SJC VOR/DME R-121 to GILRO/SJC 26.7 DME and hold.</p>
---	--	--

D-ATIS 126.95	NORCAL APP CON 120.1 290.25	SAN JOSE TOWER ★ 124.0 (CTAF) 0 257.6	GND CON 121.7	CLNC DEL 118.0	CPDLC	UNICOM 122.95
-------------------------	---------------------------------------	---	-------------------------	--------------------------	-------	-------------------------



VGSI and ILS glidepath not coincident
(VGSI Angle 3.00/TCH 75).



CATEGORY	A	B	C	D
S-ILS 12R	251-1/2 205 (200-1/2)			
S-LOC 12R	420-1/2 374 (400-1/2)		420-5/8 374 (400-5/8)	
SIDESTEP RWY 12L	600-1 556 (600-1)		600-1 1/2 556 (600-1 1/2)	600-2 556 (600-2)

