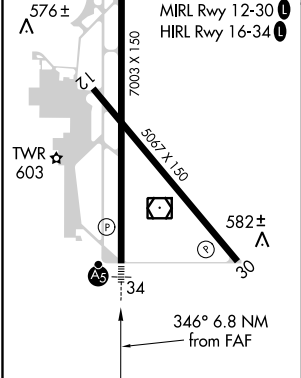
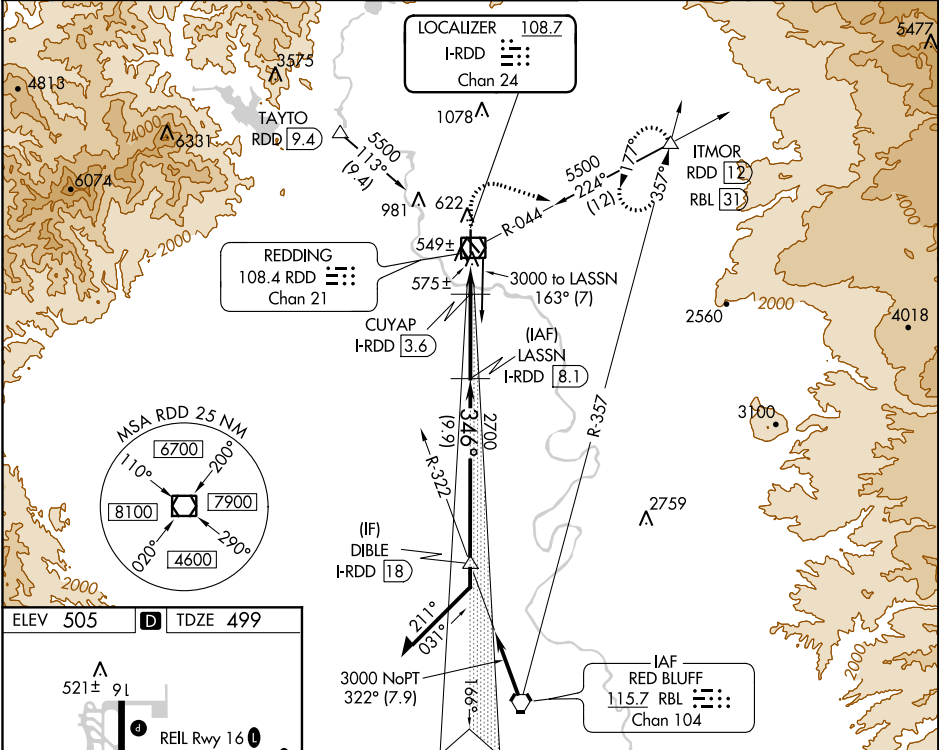


LOC/DME I-RDD	APP CRS	Rwy Idg	7003
108.7	346°	TDZE	499
Chan 24		Apt Elev	505

ILS or LOC RWY 34
REDDING MUNI (RDD)

DME required for LOC only.		MALSR 	MISSED APPROACH: Climb to 1700 then climbing right turn to 5000 on heading 090° and RDD R-044 to ITMOR INT/RDD 12 DME and hold, continue climb-in-hold to 5000.
	For inop ALS, increase S-ILS 34 Cat E visibility to 3/4 SM and S-LOC 34 Cat C/D/E visibility to 1 SM.		

ATIS 124.1	OAKLAND CENTER 132.2 350.3	REDDING TOWER ★ 119.8(CTAF) 0 269.25	GND CON 121.7	UNICOM 122.95
----------------------	--------------------------------------	--	-------------------------	-------------------------



1700 ↑ 5000 hdg 090°	RDD R-044	ITMOR △	LASSN I-RDD [8.1]	VGSI and ILS glidepath not coincident. (VGSI Angle 3.00/TCH 55.)	
Use I-RDD DME when on the localizer course. * LOC only.			DIBLE I-RDD [18]	Remain within 15 NM	
I-RDD [1.3]	CUYAP I-RDD [3.6]	2700	166°	3000	3000
1260*		2700	346°	GS 3.00° TCH 52	
2.3 NM		4.5 NM	9.9 NM		
CATEGORY	A	B	C	D	E
S-ILS 34	699-½ 200 (200-½)				
S-LOC 34	840-½	341 (400-½)	840-⅝	341 (400-⅝)	
CIRCLING	940-1	1000-1	1120-1¼	1340-2¾	1340-3
	435 (500-1)	495 (500-1)	615 (700-1¼)	835 (900-2¾)	835 (900-3)

SW-2, 31 DEC 2020 to 28 JAN 2021

SW-2, 31 DEC 2020 to 28 JAN 2021