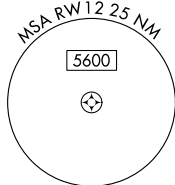
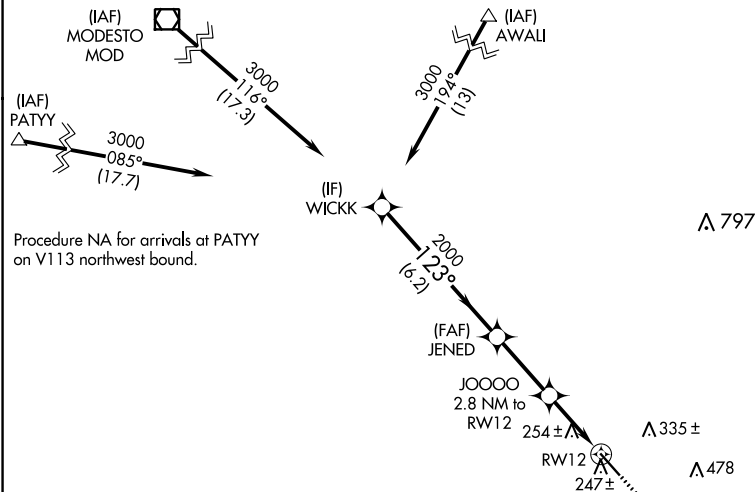


# RNAV (GPS) RWY 12

MERCED RGNL/MACREADY FIELD (MCE)

**T** Rwy 12 helicopter visibility reduction below  $\frac{3}{4}$  SM NA. For uncompensated Baro-VNAV systems, LNAV/VNAV NA below  $-3^{\circ}\text{C}$  or above  $54^{\circ}\text{C}$ .

**MISSED APPROACH:** Climb to 3600  
direct CHOWA and hold.

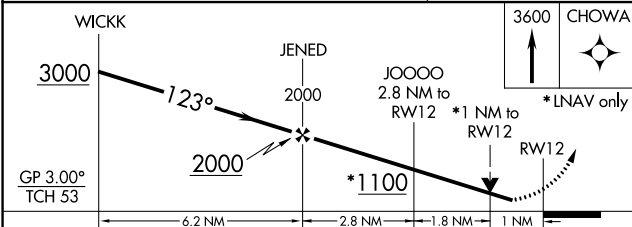
UNICOM  
122.7 (CTAF) **L**

## MISSED APCH FIX

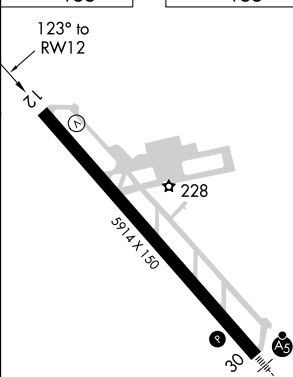


ELEV	155
------	-----

TDZE 155



CATEGORY	A	B	C	D
LPV DA		405- $\frac{3}{4}$	250 (300- $\frac{3}{4}$ )	
LNAV/ VNAV DA		434- $\frac{7}{8}$	279 (300- $\frac{7}{8}$ )	
LNAV MDA		520-1	365 (400-1)	



REIL Rwy 12 **L**  
HIRL Rwy 12-30 **L**