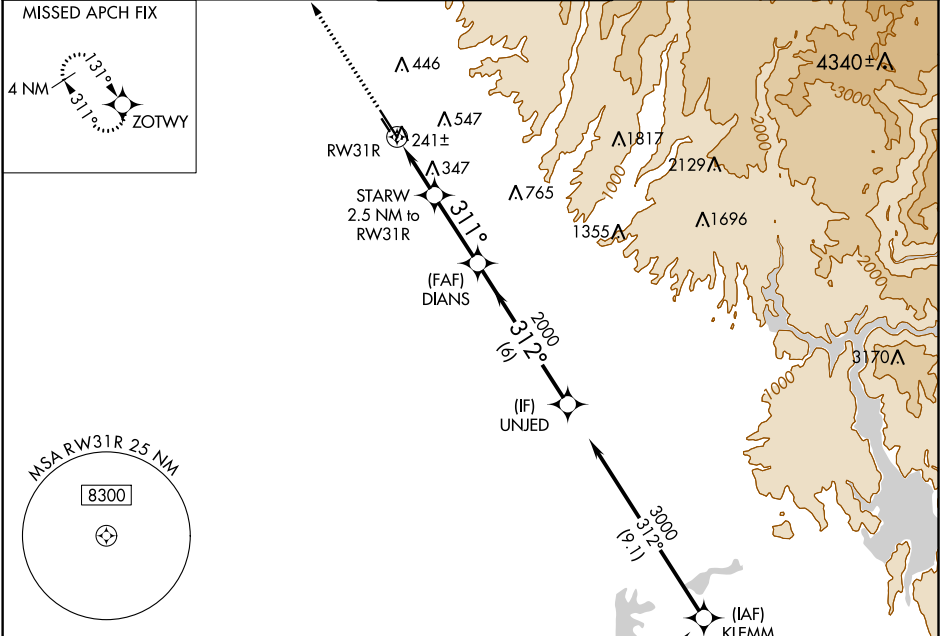


WAAS CH 77912 W31A	APP CRS 311°	Rwy Idg TDZE 226 Apt Elev 240
--	------------------------	---

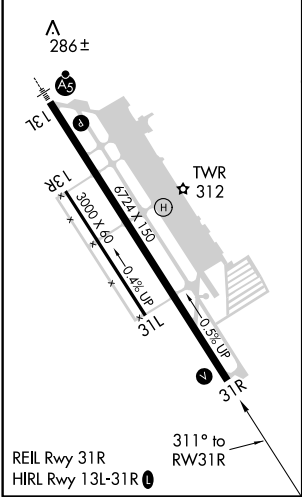
RNAV (GPS) RWY 31R
CHICO MUNI (CIC)

RNP APCH. ▼ For uncompensated Baro-VNAV systems, LNAV/VNAV NA below -15°C or above 48°C.	MISSED APPROACH: Climb to 3000 direct ZOTWY and hold.
---	---



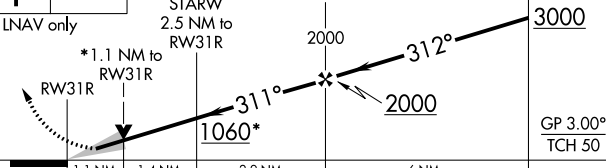
ATIS 119.675	OAKLAND CENTER 132.2 350.3	CHICO TOWER ★ 121.0 (CTAF) 239.3	GND CON 121.9	UNICOM 122.95
------------------------	--------------------------------------	--	-------------------------	-------------------------



ELEV 240	D	TDZE 226
-----------------	----------	-----------------



Procedure NA for arrivals at GRIDD on V23 and T261 southeast bound.

3000	ZOTWY	VGSI and RNAV glidepath not coincident (VGSI Angle 3.00/TCH 54).			
					
* LNAV only					
CATEGORY		A	B	C	D
LPV	DA	476-1 250 (300-1)			
LNAV/ VNAV	DA	733-1 $\frac{3}{4}$ 507 (500-1 $\frac{3}{4}$)			
LNAV MDA		600-1 374 (400-1)			600-1 $\frac{1}{4}$ 374 (400-1 $\frac{1}{4}$)