

(HOCUT5.HOCUT) 20030
HOCUT FIVE DEPARTURE

CALIFORNIA REDWOOD COAST-HUMBOLDT COUNTY (ACV)
AL-519 (FAA)
ARCATA/EUREKA, CALIFORNIA

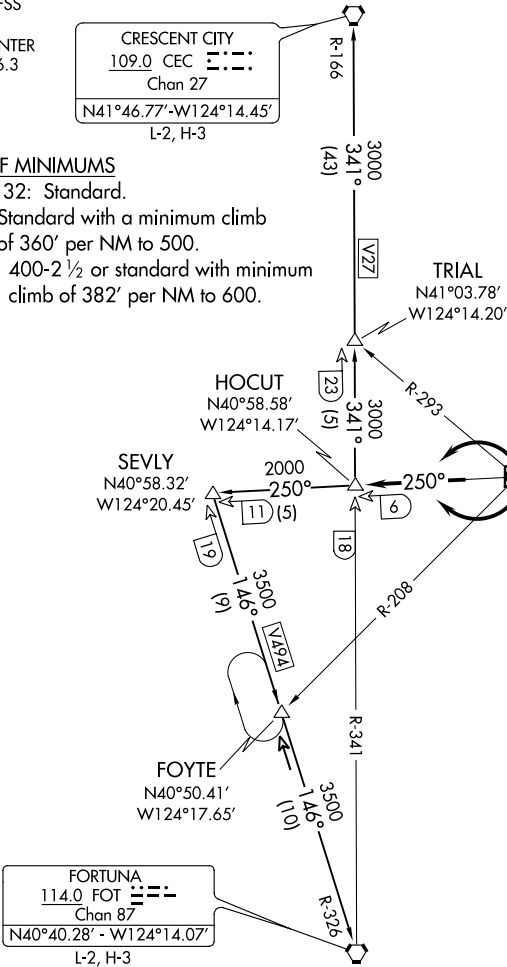
OAKLAND FSS
122.6
SEATTLE CENTER
124.85 306.3

CRESCENT CITY
109.0 CEC
Chan 27
N41°46.77'-W124°14.45'
L-2, H-3

TOP ALTITUDE:
ASSIGNED BY ATC

TAKEOFF MINIMUMS

- Rwy 19, 32: Standard.
Rwy 1: Standard with a minimum climb
of 360' per NM to 500.
Rwy 14: 400-2 1/2 or standard with minimum
climb of 382' per NM to 600.



NOTE: Chart not to scale.

DEPARTURE ROUTE DESCRIPTION

TAKEOFF RUNWAYS 1 and 32: Climbing left turn on ACV R-250, thence. . . .
TAKEOFF RUNWAYS 14 and 19: Climbing right turn on ACV R-250, thence. . . .
. . . .on (transition) or (assigned route).

CRESCENT CITY TRANSITION (HOCUT5.CEC): From over HOCUT INT on FOT R-341
and CEC R-166 to CEC VORTAC.
FORTUNA TRANSITION (HOCUT5.FOT): From over HOCUT INT on ACV R-250 to
SEVLY INT, then via FOT R-326 to FOT VORTAC.

HOCUT FIVE DEPARTURE
(HOCUT5.HOCUT) 12OCT17

ARCATA/EUREKA, CALIFORNIA
CALIFORNIA REDWOOD COAST-HUMBOLDT COUNTY (ACV)

SW-2, 31 DEC 2020 to 28 JAN 2021

SW-2, 31 DEC 2020 to 28 JAN 2021