

TACAN RWY 21R

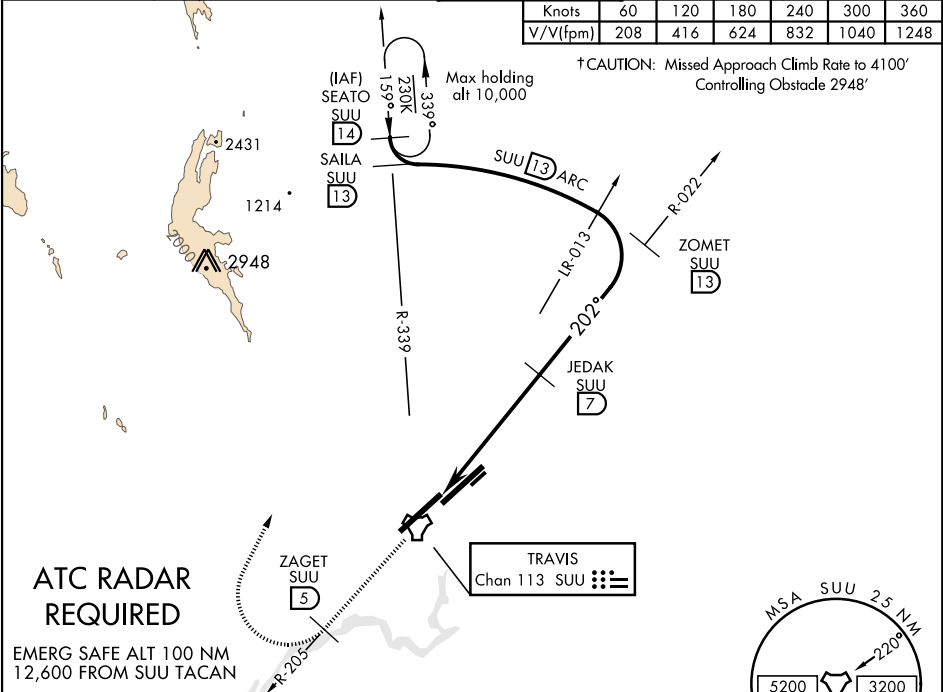
TACAN SUU Chan 113	APCH CRS 202°	Rwy Idg 11,001 TDZE 51 Arpt Elev 63
------------------------------	-------------------------	--

AL-488 [USAF]

TRAVIS AFB (KSUU)

* Circling not authorized NW of Rwy 3L-21R.		† MISSED APPROACH: Climb to 5000 via SUU TACAN R-205 to ZAGET, then turn right heading 010° to intercept SUU R-339 to SEATO and hold, continue climb in hold to 5000.		
ATIS 135.55 292.125	TRAVIS APP CON 119.9(S) 126.6(N) 281.45	TRAVIS TOWER 120.75 254.4	GND CON 121.8 289.4	CLNC DEL 127.55 335.8

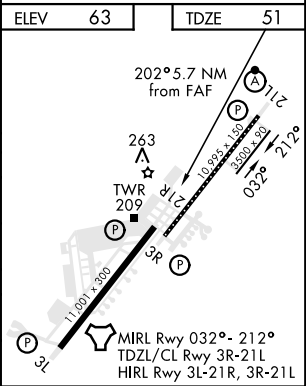
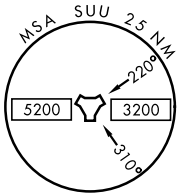
Knots	60	120	180	240	300	360
V/V(fpm)	208	416	624	832	1040	1248



ATC RADAR
REQUIRED

EMERG SAFE ALT 100 NM
12,600 FROM SUU TACAN

5000 SUU R-205	SUU 5					
TACAN	YOGIE 1.4	JEDAK 7	ZOMET 13	SAILA 13	SEATO 14	5000
1800		3700		159°		202°
5.6 NM		Arc 13		2.79°		TCH 73
CATEGORY	A	B	C	D	E	
S-21R	700-1	649 (700-1)	700-17 $\frac{1}{8}$	649	(700-17 $\frac{1}{8}$)	
CIRCLING*	700-1	637 (700-1)	740-2 677 (700-2)	1200-3	1137 (1200-3)	
† NON-STANDARD CLIMB GRADIENT						
S-21R	600-1	549 (600-1)	600-15 $\frac{1}{8}$	549	(600-15 $\frac{1}{8}$)	
CIRCLING*	600-1	537 (600-1)	740-2 677 (700-2)	1200-3	1137 (1200-3)	



TACAN RWY 21R

SW-2, 31 DEC 2020 to 28 JAN 2021

SW-2, 31 DEC 2020 to 28 JAN 2021