

RNAV (GPS) RWY 21L

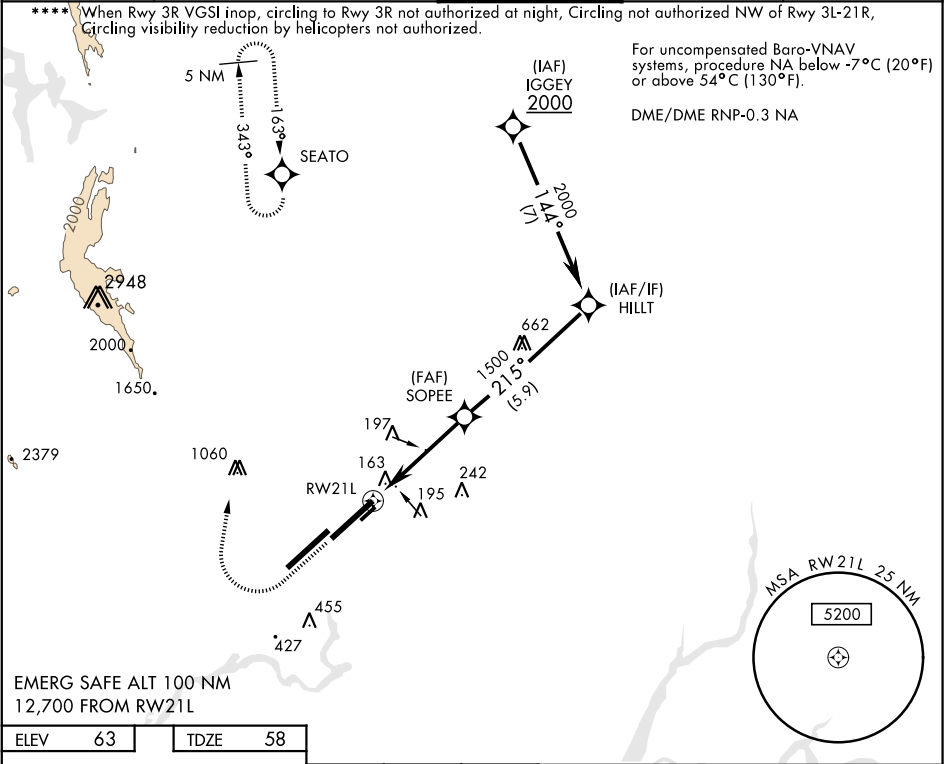
WAAS CH <b>71274</b> <b>W21A</b>	APCH CRS <b>215°</b>	Rwy Idg <b>10,995</b> TDZE <b>58</b> Arprt Elev <b>63</b>
--	-------------------------	---

AL-488 [USAF]

TRAVIS AFB (KSUU)

<b>▼</b> * When ALS inop increase all CAT RVR to 40, vis to ¾ mile. ** When ALS inop increase all CAT vis to 1½ mile. *** When ALS inop, increase CAT AB RVR to 55, vis to 1 mile, CAT CDE vis to 1½ miles.	ALSf-2 	MISSED APPROACH: Climb to 2200 then climbing right turn to 4400 direct SEATO and hold, continue climb-in-hold to 4400.
---	------------	--

ATIS <b>135.55 292.125</b>	TRAVIS APP CON <b>119.9(S) 126.6(N) 281.45</b>	TRAVIS TOWER <b>120.75 254.4</b>	GND CON <b>121.8 289.4</b>	CLNC DEL <b>127.55 335.8</b>
-------------------------------	---	-------------------------------------	-------------------------------	---------------------------------



ELEV 63 TDZE 58		2200	4400	SEATO	†LNAV only	HILLT 2000
<p>215° to RW21L 263 TWR 209 212R 212° 10.995 + 1.50 3002.50 032° 11.00 + 300 74 MIRL Rwy 032° - 212° TDZL/CL Rwy 3R-21L HIRL Rwy 3L-21R, 3R-21L</p>		<p>1.3 NM to RW21L 4.6 NM 1500 GP 2.80° TCH 54</p>				
CATEGORY	A	B	C	D	E	
LPV DA *	258/18		200	(200-½)		
LNAV/VNAV DA **	502/60		444	(500-1½)		
LNAV MDA ***	500/24	442 (500-½)	500/45	442	(500-¾)	
****	540-1 477 (500-1)	580-1 517 (600-1)	1100-3 1037 (1100-3)	1200-3	1137 (1200-3)	
CIRCLING						

RNAV (GPS) RWY 21L