


ILS or LOC RWY 21L

LOC I-SUU <u>110.1</u>	APCH CRS 215°	Rwy Idg 10,995 TDZE 58 Arpt Elev 63
----------------------------------	-------------------------	--

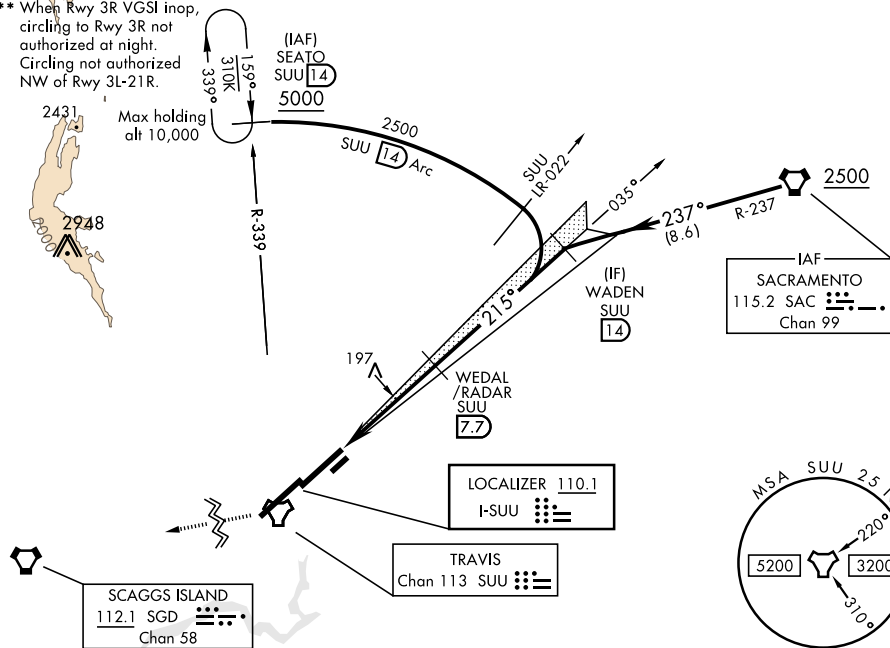
AL-488 [USAF]

TRAVIS AFB (KSUU)

<p>▼ * When ALS inop, increase all CATs RVR to 40, vis to $\frac{3}{4}$ miles. When TDZL/CL inop, increase all CATs RVR to 24.</p>				<p>ALSF-2</p> 		<p>MISSED APPROACH: Climb straight ahead to SUU TACAN then turn right direct SGD VORTAC climbing to 4400. Expect further clearance prior to SGD.</p>			
<p>ATIS</p> <p>135.55 292.125</p>		<p>TRAVIS APP CON</p> <p>119.9 (S) 126.6 (N) 281.45</p>		<p>TRAVIS TOWER</p> <p>120.75 254.4</p>		<p>GND CON</p> <p>121.8 289.4</p>		<p>CLNC DEL</p> <p>127.55 335.8</p>	

** When ALS inop, increase CAT AB RVR to 55 and vis to 1 mile, CAT CDE vis to 1 3/8 mile.

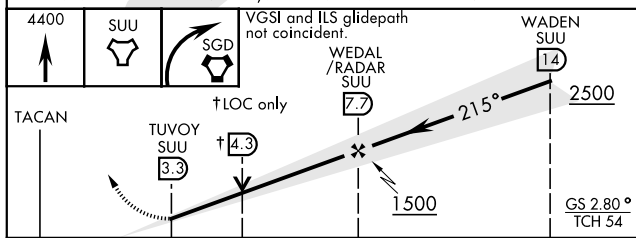
*** When Rwy 3R VGSi inop
circling to Rwy 3R not
authorized at night.
Circling not authorized
NW of Rwy 3L-21R.



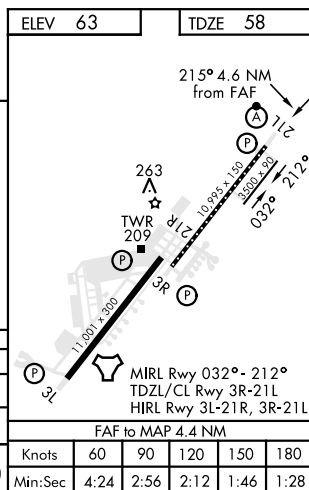
ATC RADAR REQUIRED

(Except for full approach from SAC)

EMERG SAFE ALT 100 NM 12,600 FROM "SUU" TACAN



	0.2 NM	4.4 NM			
CATEGORY	A	B	C	D	E
S-ILS 21L *	258/18		200 (200-½)		
S-LOC 21L **	500/24	442 (500-½)	500/45	442	(500- ⅔)
*** C CIRCLING	540-1 477 (500-1)	580-1 517 (600-1)	1100-3 1037(1100-3)	1200-3	1137 (1200-3)



FAIRFIELD, CALIFORNIA

38°16'N-121°56'W

TRAVIS AFB (KSUU)

Amdt 2 19JUL18

ILS or LOC RWY 21L

SW-2, 31 DEC 2020 to 28 JAN 2021

SW-2, 31 DEC 2020 to 28 JAN 2021