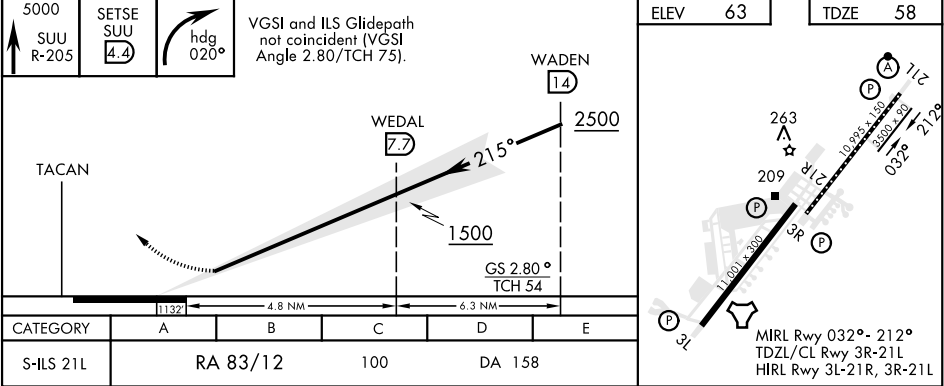
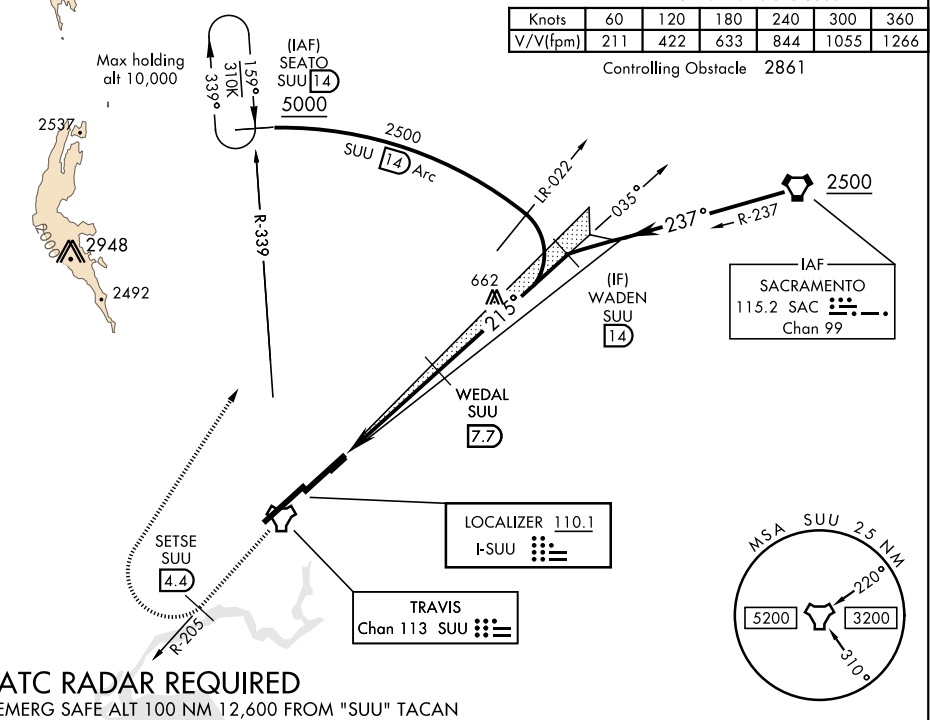


ILS RWY 21L (CAT II)

LOC I-SUU 110.1	APCH CRS 215°	Rwy Idg TDZE Arprt Elev 10,995 58 63	AL-488 [USAF]	TRAVIS AFB (KSUU)
ATIS 135.55 292.125		TRAVIS APP CON 119.9(S) 126.6(N) 281.45		TRAVIS TOWER 120.75 254.4
		GND CON 121.8 289.4		CLNC DEL 127.55 335.8

CATEGORY II ILS SPECIAL AIRCREW & AIRCRAFT CERTIFICATION REQUIRED



ILS RWY 21L (CAT II)

SW-2, 31 DEC 2020 to 28 JAN 2021

SW-2, 31 DEC 2020 to 28 JAN 2021