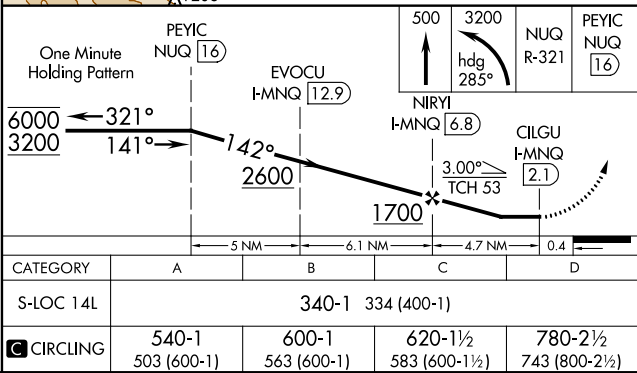
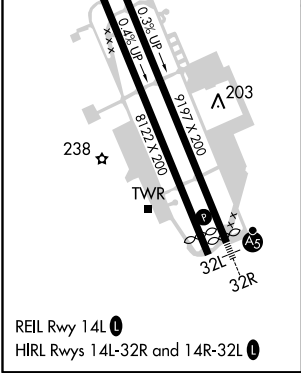
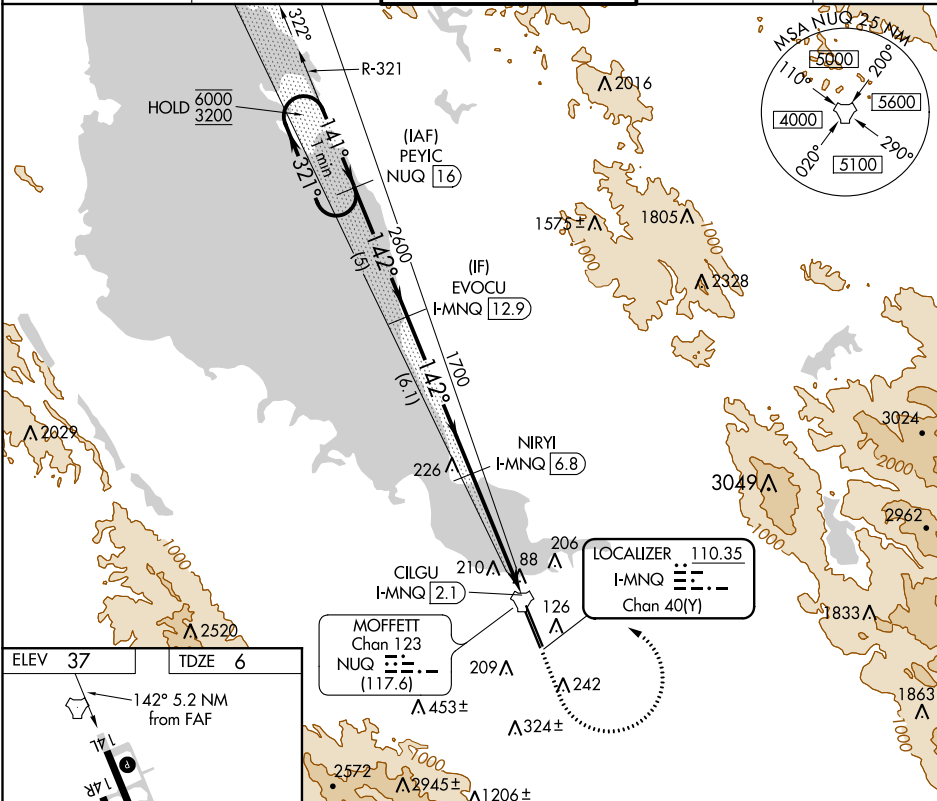


LOC/DME I-MNQ 110.35 Chan 40 (Y)	APP CRS 142°	Rwy ldg 9197 TDZE 6 Apt Elev 37
--	------------------------	--

LOC RWY 14L
MOFFETT FEDERAL AFLD (NUQ)

DME required. RADAR required for procedure entry. TACAN required.	MISSED APPROACH: Climb to 500 then climbing left turn to 3200 on heading 285° and on NUQ TACAN R-321 to PEYC/NUQ TACAN 16 DME and hold.
---	---

ATIS 124.175 283.0	NORCAL APP CON 120.1 290.25	MOFFETT TOWER ★ 119.55 (CTAF) 259.65	GND CON 121.85 278.95	CLNC DEL 296.75
------------------------------	---------------------------------------	---	---------------------------------	---------------------------



SW-2, 31 DEC 2020 to 28 JAN 2021

SW-2, 31 DEC 2020 to 28 JAN 2021