
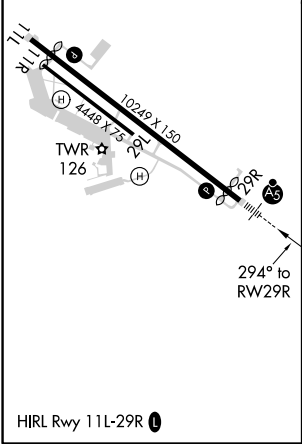
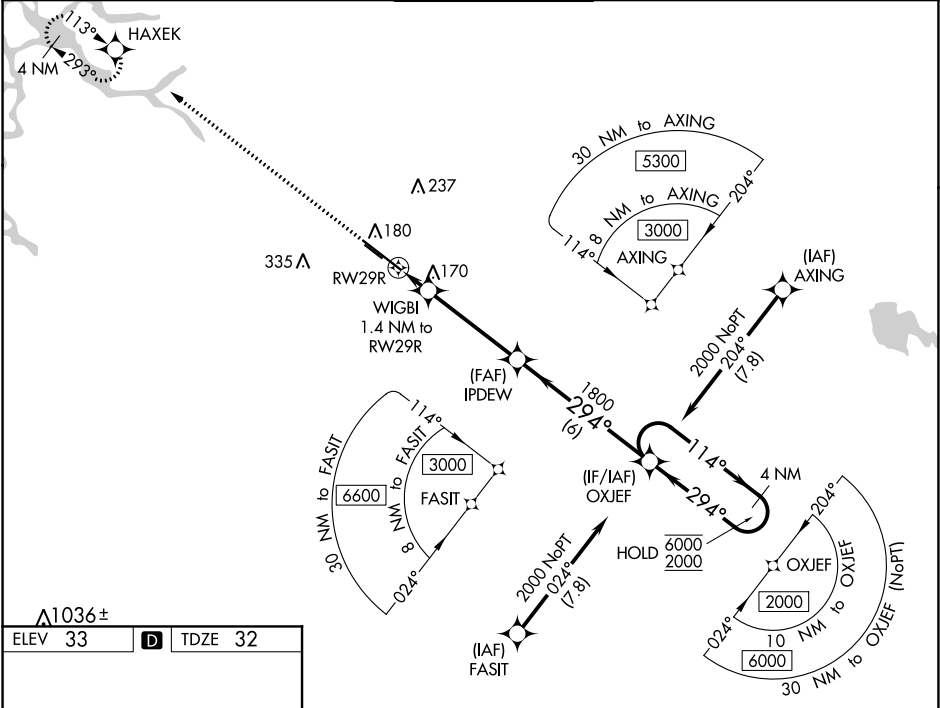


WAAS CH 87010 W29A	APP CRS 294°	Rwy Idg 8650 TDZE 32 Apt Elev 33
--	------------------------	---

RNAV (GPS) RWY 29R
STOCKTON METROPOLITAN (SCK)

RNP APCH.			<div>MALSR</div> <div></div>	MISSED APPROACH: Climb to 2700 direct HAXEK and hold.
<div><div>T</div></div>	For uncompensated Baro-VNAV systems, LNAV/VNAV NA below -3°C or above 54°C. For inop ALS, increase LNAV/VNAV visibility all Cats to RVR 4500. #RVR 1800 authorized with use of FD or AP or HUD to DA.			
ATIS 118.25	NORCAL APP CON (SE-NW) 123.85 278.3 (N-SE) 125.1 363.2	STOCKTON TOWER ★ 120.3 (CTAF) 0 239.0	GND CON 121.9	UNICOM 122.95



2700

HAXEK

VGSi and RNAV glidepath not coincident (VGSi Angle 3.00/TCH 71).

OXJEF

4 NM Holding Pattern

*LNAV only

WIGBI

1.4 NM to RW29R

IPDEW

1800

RW29R

520*

1800

294°

114°

6000

2000

GP 3.00° TCH 55

1.4 NM

4.1 NM

6 NM

CATEGORY	A	B	C	D
LPV DA#		232/24	200 (200-½)	
LNAV/VNAV DA		320/24	288 (300-½)	
LNAV MDA	420/24	388 (400-½)	420/35	388 (400-¾)
CIRCLING	500-1 467 (500-1)	540-1 507 (600-1)	640-1¾ 607 (700-1¾)	640-2 607 (700-2)