

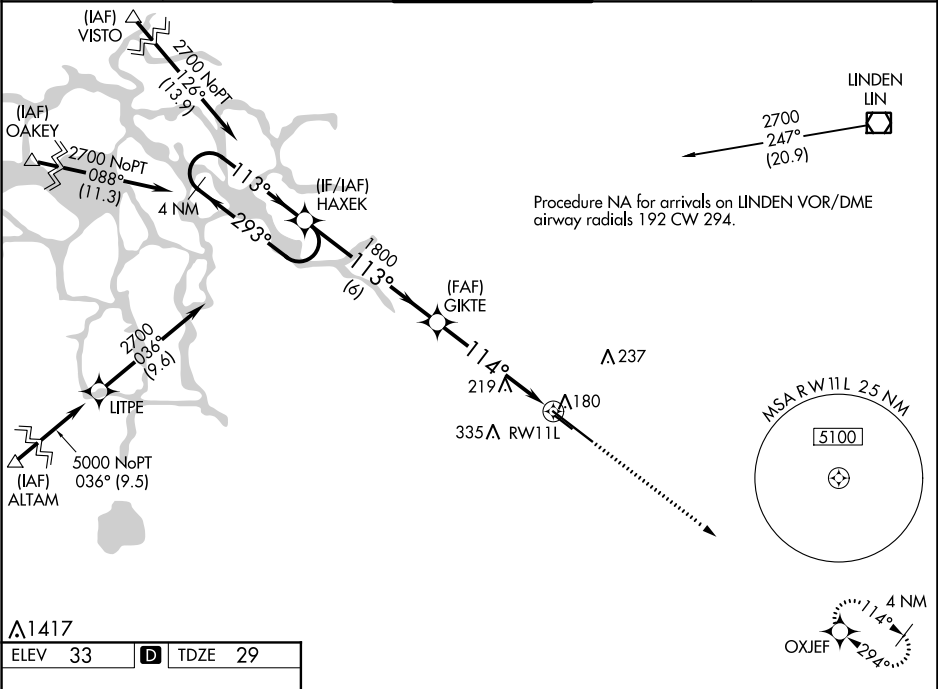
WAAS CH 72910 W11A	APP CRS 114°	Rwy Idg TDZE 29 Apt Elev 33
--	------------------------	---

RNAV (GPS) RWY 11L

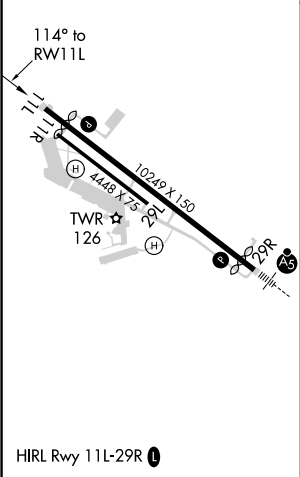
STOCKTON METROPOLITAN (SCK)

<div><div>▼</div><div>For uncompensated Baro-VNAV systems, LNAV/VNAV NA below -4°C (25°F) or above 54°C (130°F). DME/DME RNP-0.3 NA.</div></div>	<div>MISSED APPROACH: Climb to 2000 direct OXJEF and hold.</div>
--	--

ATIS 118.25	NORCAL APP CON (SE-NW) 123.85 278.3 (N-SE) 125.1 363.2	STOCKTON TOWER * 120.3 (CTAF) 0 239.0	GND CON 121.9	UNICOM 122.95
-----------------------	--	--	-------------------------	-------------------------



ELEV 33	D	TDZE 29
---------	----------	---------



VGSI and RNAV glidepath not coincident (VGSI Angle 3.00/TCH 75).				
4 NM Holding Pattern HAXEK				
2700 ← 293° 113° → 1800				
GP 3.00° TCH 50				
1800 113° 114° 1800				
6 NM 4.2 NM 1.2 NM				
CATEGORY	A	B	C	D
LPV DA	229-3/4 200 (200-3/4)			
LNAV/VNAV DA	471-1 1/2 442 (500-1 1/2)			
LNAV MDA	480-1	451 (500-1)	480-1 3/8	451 (500-1 3/8)
C CIRCLING	500-1 467 (500-1)	540-1 507 (600-1)	640-1 3/4 607 (700-1 3/4)	640-2 607 (700-2)