

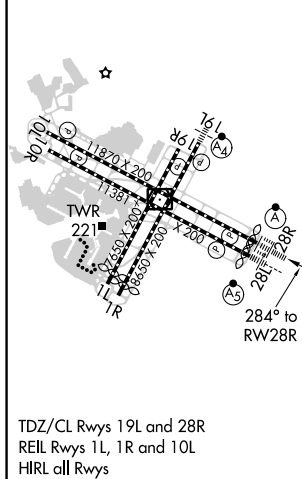
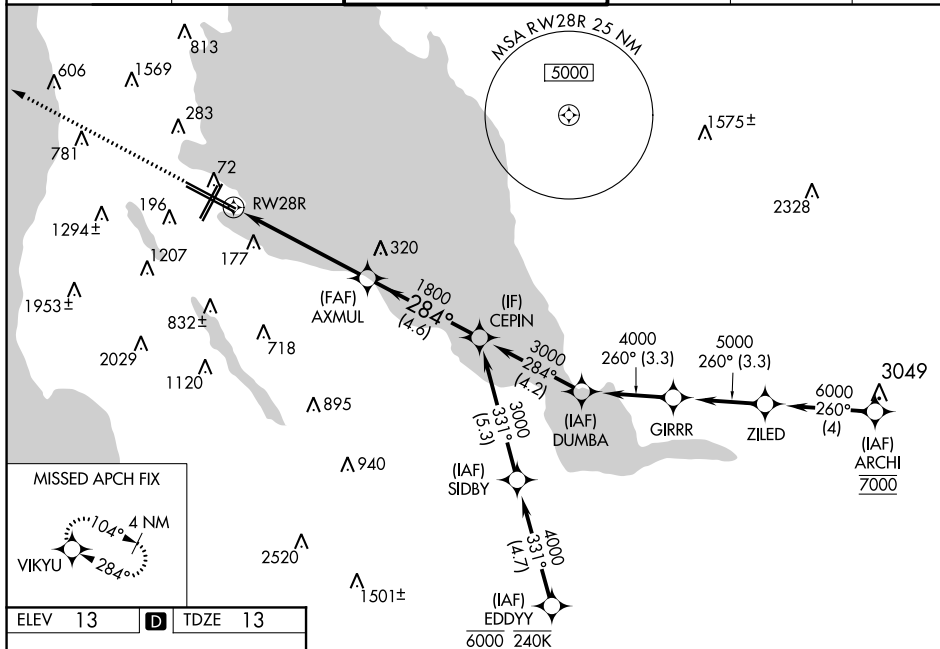


WAAS CH 48803 W28A	APP CRS 284°	Rwy Idg 11236 TDZE 13 Apt Elev 13
--	------------------------	--

RNAV (GPS) Z RWY 28R
SAN FRANCISCO INTL (SFO)

RNP APCH.  Circling NA to Rwy's 10L, 10R, 19L, and 19R. Circling Rwy 1L, 1R NA at night. For uncompensated Baro-VNAV systems, LNAV/VNAV AL below 3°C or above 54°C. For inop ALS, increase LNAV/VNAV all Cats visibility to 1½ SM, increase LNAV Cat C/D visibility to 2 SM.		ALSF-2 		MISSED APPROACH: Climb to 3200 direct VIKYU and hold, continue climb-in-hold to 3200.	
D-ATIS 113.7 115.8 118.85		NORCAL APP CON 134.5 338.2		SAN FRANCISCO TOWER 120.5 269.1	
		GND CON 121.8		CLNC DEL 118.2	
				CPDLC	



RNAV (GPS) Z RWY 28R