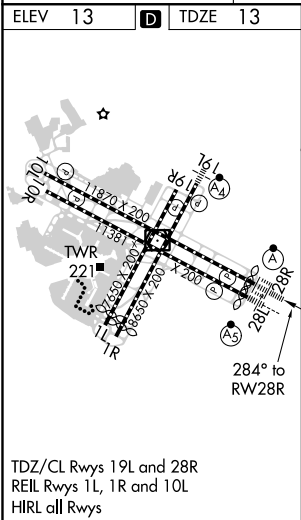
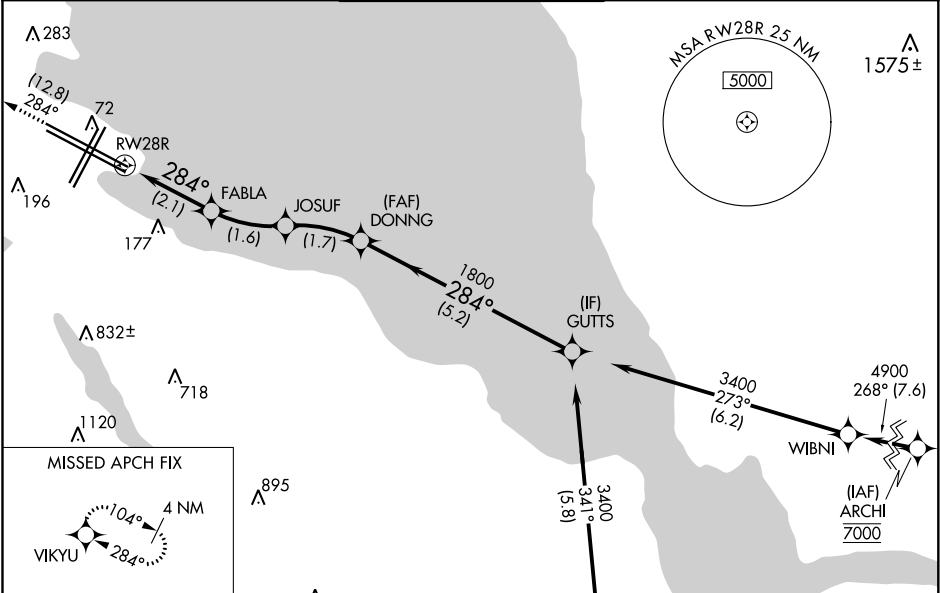


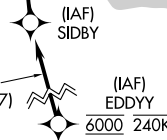

APP CRS	Rwy Idg	11236
284°	TDZE	13
	Apt Elev	13

RNAV (RNP) Y RWY 28R  
SAN FRANCISCO INTL (SFO)

RNP AR APCH, RF required.	ALSF-2	MISSED APPROACH: Climb to 3000 on track 284° to VIKYU and hold. * Missed approach requires minimum climb of 250 feet per NM to 1600. # Missed approach requires minimum climb of 350 feet per NM to 2100.
▼ For uncompensated Baro-VNAV systems, procedure NA below 3°C or above 54°C. For inop ALS, increase RNP 0.11 all Cats visibility to RVR 4000 and RNP 0.30 all Cats visibility to RVR 4500.		

D-ATIS 113.7 115.8 118.85	NORCAL APP CON 134.5 338.2	SAN FRANCISCO TOWER 120.5 269.1	GND CON 121.8	CLNC DEL 118.2	CPDLC
---------------------------------	-------------------------------	------------------------------------	------------------	-------------------	-------



940			
3000 ↑ tr 284°	VIKYU 	VGSI and RNAV glidepath not coincident (VGSI Angle 3.00/TCH 68)	
		GUTTS	
		3400	
		GP 3.00° TCH 55	
		FABLA 743	
		JOSUF 1264	
		DONNG 1800	
		RW28R 284°	
		284°	
		1800	
		2.1 NM 1.6 NM 1.7 NM 5.2 NM	
CATEGORY	A	B	C D
RNP 0.11 DA*	263/24		250 (300-½)
RNP 0.30 DA#	326/24		313 (400-½)
AUTHORIZATION REQUIRED			

SW-2, 31 DEC 2020 to 28 JAN 2021

SW-2, 31 DEC 2020 to 28 JAN 2021