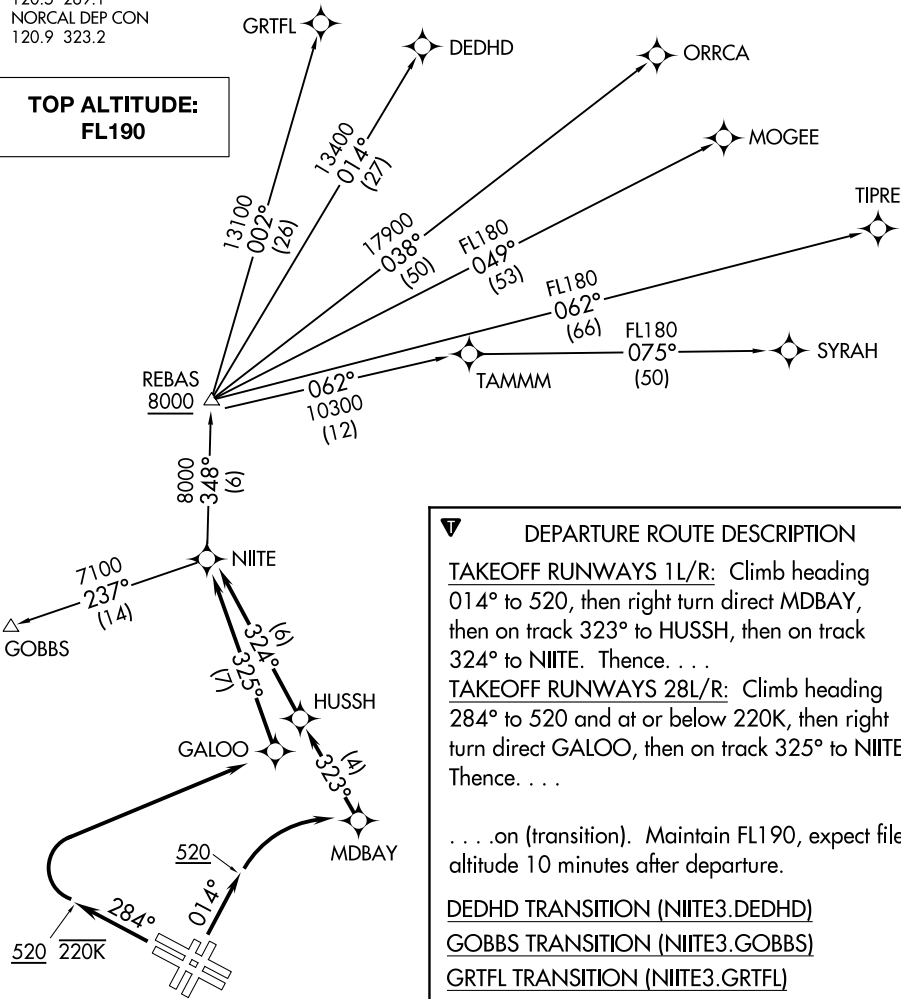


D-ATIS  
113.7 115.8 118.85  
CLNC DEL  
118.2  
CPDLC  
GND CON  
121.8  
SAN FRANCISCO TOWER  
120.5 269.1  
NORCAL DEP CON  
120.9 323.2

TAKEOFF MINIMUMS

Rwys 1L/R: Standard with a minimum climb of 500' per NM to 520.  
Rwy 28L: Standard with minimum climb of 535' per NM to 2100.  
Rwy 28R: Standard with minimum climb of 560' per NM to 2100.

TOP ALTITUDE:  
FL190



DEPARTURE ROUTE DESCRIPTION

**TAKEOFF RUNWAYS 1L/R:** Climb heading 014° to 520, then right turn direct MDBAY, then on track 323° to HUSSH, then on track 324° to NIITE. Thence. . . .  
**TAKEOFF RUNWAYS 28L/R:** Climb heading 284° to 520 and at or below 220K, then right turn direct GALOO, then on track 325° to NIITE. Thence. . . .

. . . .on (transition). Maintain FL190, expect filed altitude 10 minutes after departure.

DEDHD TRANSITION (NIITE3.DEDHD)

GOBBS TRANSITION (NIITE3.GOBBS)

GRTFL TRANSITION (NIITE3.GRTFL)

MOGEE TRANSITION (NIITE3.MOGEE)

ORRCA TRANSITION (NIITE3.ORRCA)

SYRAH TRANSITION (NIITE3.SYRAH)

TIPRE TRANSITION (NIITE3.TIPRE)

NOTE: RNAV 1.  
NOTE: RADAR required.  
NOTE: DME/DME/IRU or GPS required.

NOTE: Chart not to scale.