

LOC/DME I-GWQ 111.7 Chan 54	APP CRS 284°	Rwy Idg 11236 TDZE 13 Apt Elev 13	28R 10275 28L 13
---	------------------------	--	-----------------------------------

ILS or LOC RWY 28R

SAN FRANCISCO INTL (SFO)

RNAV 1-GPS or RADAR required for procedure entry.

⚠

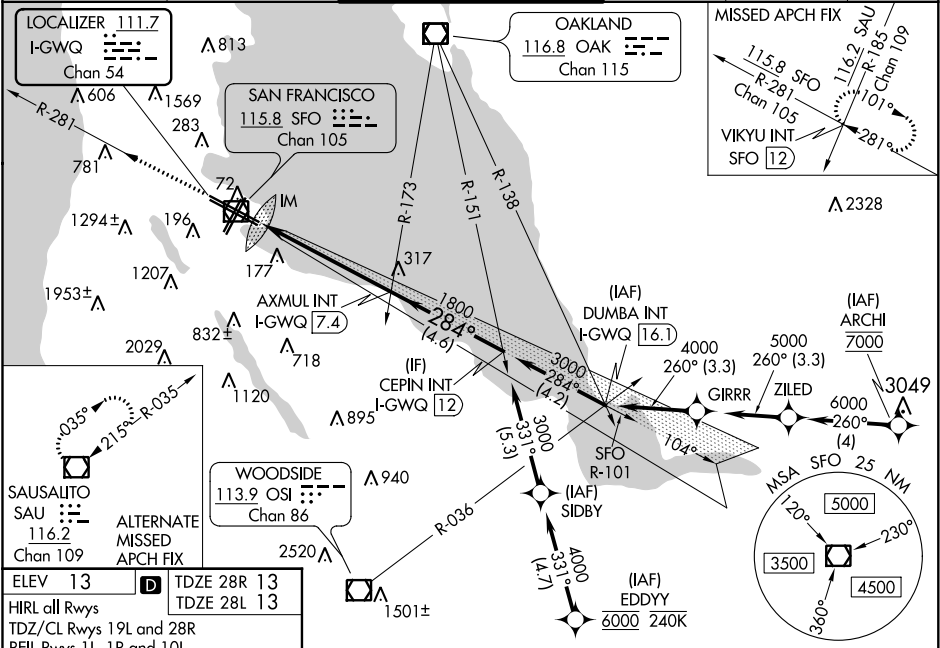
Circling NA to Rwy 10L, 10R, 19L, and 19R. Circling Rwy 1L, 1R NA at night. For inop ALS increase S-LOC 28R# Cat C/D visibility to 1 1/2 SM. LOC procedure NA during simultaneous operations. Simultaneous approach authorized. Simultaneous operations require use of vertical guidance; maintain last assigned altitude until established on glideslope.

ALSf-2
Rwy 28R

MALSR
Rwy 28L

MISSED APPROACH: Climb to 3000 on SFO VOR/DME R-281 to VIKYU INT/SFO 12 DME and hold.
Missed approach requires minimum climb of 350 feet per NM to 1900; if unable to meet climb gradient, see ILS or LOC RWY 28L.

D-ATIS 113.7 115.8 118.85	NORCAL APP CON 134.5 338.2	SAN FRANCISCO TOWER 120.5 269.1	GND CON 121.8	CLNC DEL 118.2	CPDLC
---	--------------------------------------	---	-------------------------	--------------------------	-------



ELEV 13

TDZE 28R 13

TDZE 28L 13

HIRL all Rwys

TDZ/CL Rwys 19L and 28R

REIL Rwys 1L, 1R and 10L

3000

VIKYU INT

SFO R-281

*LOC only

I-GWQ

2

IM

0.1

1.2 NM

4.2 NM

4.6 NM

1800

284°

3000

GS 3.00°

TCH 55

Use I-GWQ DME when on the localizer course.

VGSI and ILS glidepath not coincident

(VGSI Angle 3.00/TCH 68).

AXMUL INT

I-GWQ

7.4

1800

284°

3000

CEPIN INT

I-GWQ

12

CATEGORY	A	B	C	D		
S-ILS 28R#	213/18 200 (200-1/2)					
S-LOC 28R#	480/24 467 (500-1/2)		480/50 467 (500-1)			
SIDESTEP # 28L	480/55 467 (500-1)			480-1 1/2 467 (500-1 1/2)		
FAF to MAP 5.4 NM	Knots	60	90	120	150	180
	Min:Sec	5:24	3:36	2:42	2:10	1:48
CIRCLING	740-1	960-1 1/4	1560-3	NA		
	727 (800-1)	947 (1000-1 1/4)	1547 (1600-3)			