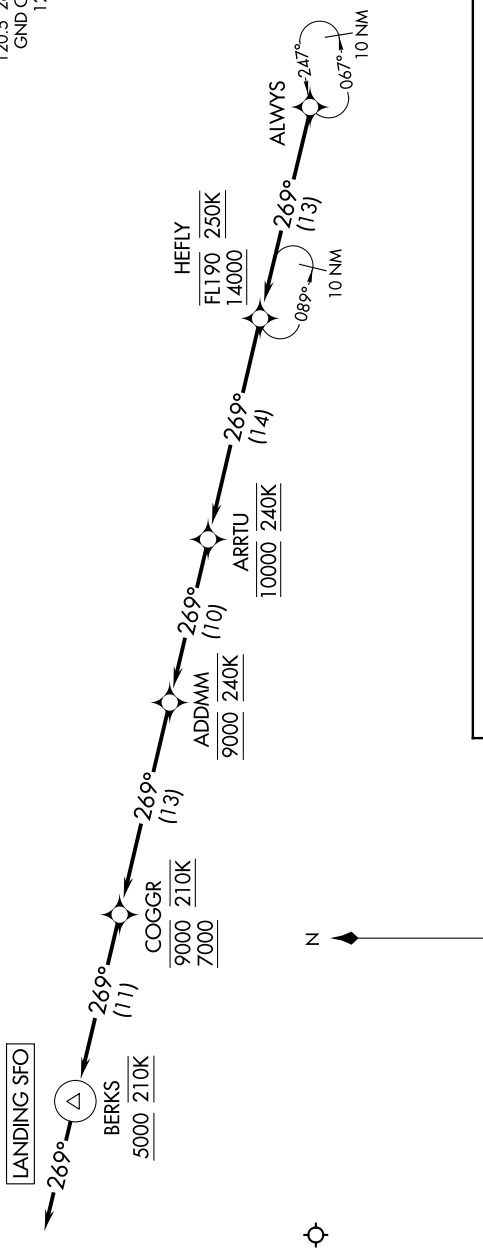


SAN FRANCISCO INTL (SFO)  
SAN FRANCISCO, CALIFORNIA

## ALWYS TWO ARRIVAL (RNAV) Arrival Routes

OAKLAND CENTER	134.37	281.5
NORCAL APP CON	128.325	254.3
D-ATIS	113.7	115.8 118.85
SAN FRANCISCO TOWER	120.5	269.1
GND CON		121.8



## ARRIVAL ROUTE DESCRIPTION

**LANDING RUNWAYS 19L/R:** From ALWAYS on track 269° to cross HEFLY between 14000 and FL190 and at 250K, then on track 269° to cross ARRTU at 10000 and at 240K, then on track 269° to cross ADDMM at 9000 and at 2240K, then on track 269° to cross COGGR between 7000 and 9000 and at 210K, then on track 269° to cross BERKS at or above 5000 and at 210K, then on track 269°. Expect ILS or RNAV (GPS) approach to Rwy 19L or RADAR vectors to final approach course.

NOTE: RADAR required.

NOTE: RNAV 1.

NOTE: DME/DME/IRU or GPS required.

NOTE: Expect "descend via" clearance from Oakland Center. Northern California TRACON will assign landing runway.

NOTE: Chart not to scale.

SW-2, 31 DEC 2020 to 28 JAN 2021

## ALWYS TWO ARRIVAL (RNAV) Arrival Routes

(ALWYS.ALWYS2) 13SEP18

SAN FRANCISCO, CALIFORNIA  
SAN FRANCISCO INTL (SFO)