

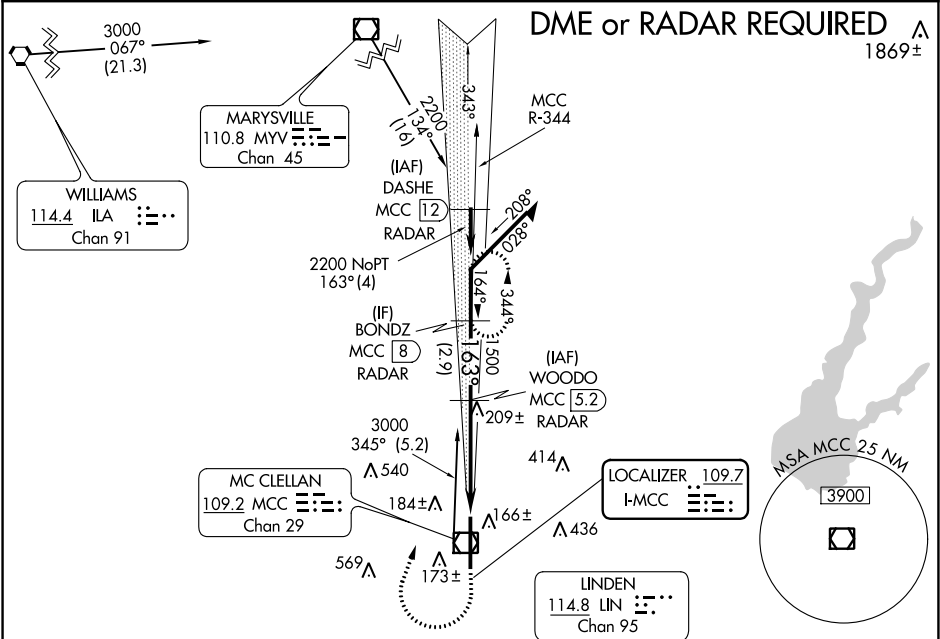
LOC I-MCC	APP CRS	Rwy Idg	10599
109.7	163°	TDZE	77
		Apt Elev	77

ILS or LOC RWY 16

MCC CLELLAN AIRFIELD (MCC)

NA	DME from MCC VOR/DME. If local altimeter setting is not received, use Sacramento Intl altimeter setting and increase all DH/MDAs 40 feet.	SSALR	MISSED APPROACH: Climb to 1200 then climbing right turn to 2200 via MCC VOR/DME R-344 to BONDZ/MCC 8 DME/RADAR and hold.
----	---	-------	--

AWOS-3	NORCAL APP CON	CINC DEL	UNICOM
125.975	127.4 317.5	119.825	122.975 (CTAF) 0



ELEV 77		TDZE 77	
115.2 SAC		163° 4.3 NM from FAF	
Chan 99		91	
109.2 MCC		10599 X 150	
Chan 29		34	
114.8 LIN		HIRL Rwy 16-34 0	
Chan 95		FAF to MAP 4.3 NM	
1200		Knots	
2200		60 90 120 150 180	
BONDZ		Min:Sec	
MCC 8		4:18 2:52 2:09 1:43 1:26	
RADAR			