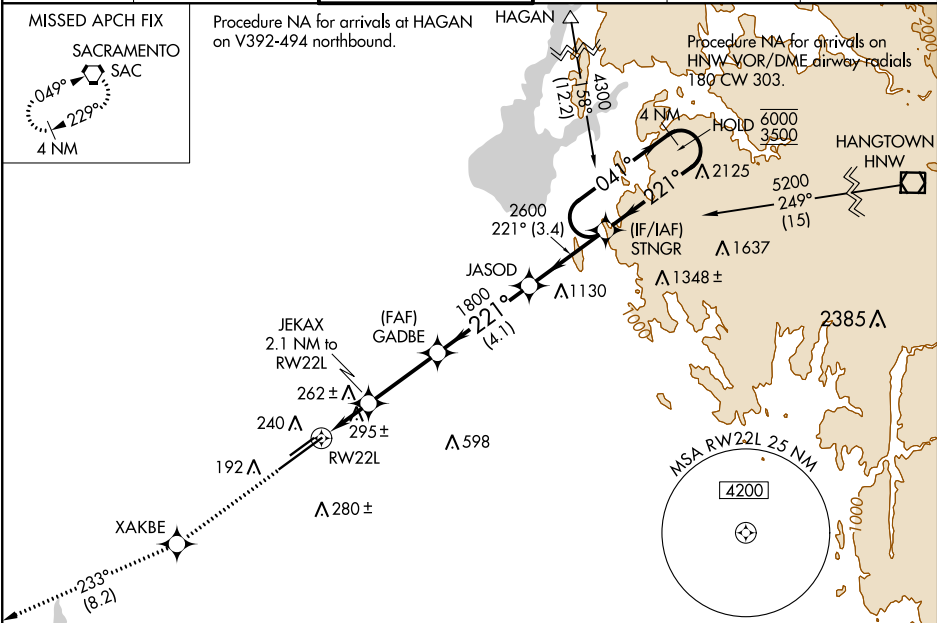


WAAS CH <b>40225</b> <b>W22A</b>	APP CRS <b>221°</b>	Rwy Idg <b>11301</b> TDZE <b>98</b> Apt Elev <b>98</b>
--	------------------------	--

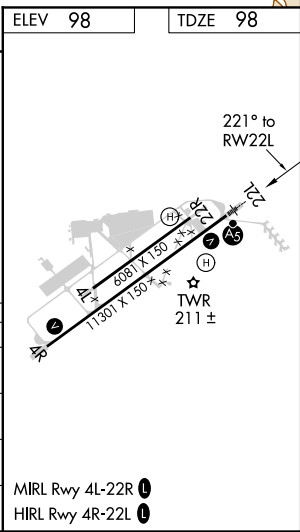
RNAV (GPS) RWY 22L  
SACRAMENTO MATHER (MHR)

RNP APCH. ⚠ Circling NA northwest of Rwy 4R-22L. For uncompensated Baro-VNAV systems, LNAV/VNAV NA below -15°C or above 54°C. For inop ALS, increase LNAV/VNAV all Cats visibility to 1½ SM and LNAV Cat C/D visibility to 1½ SM.	MALSR ⚠	MISSED APPROACH: Climb to 3000 direct XAKBE and on track 233° to SAC VORTAC and hold.
--	------------	---

ATIS <b>118.325</b>	NORCAL APP CON <b>127.4 317.5</b>	MATHER TOWER ★ <b>120.65 (CTAF) 0 282.25</b>	GND CON <b>121.85 307.9</b>	CLNC DEL <b>121.85 307.9</b>	UNICOM <b>122.95</b>
------------------------	--------------------------------------	---	--------------------------------	---------------------------------	-------------------------



3000 ↑	XAKBE ✧	tr 233°	SAC ◡	VGSI and RNAV glidepath not coincident (VGSI Angle 3.00/TCH 50).				
* LNAV only				JASOD	STNGR	4 NM Holding Pattern		
JEKAX 2.1 NM to RW22L				GADBE 1800	2600	041° → 6000 ← 221° 3500		
* 1.4 NM to RW22L				1800	221°	GP 3.00° TCH 56		
RW22L				800*	1800			
1.4 NM				0.7	3.1 NM	4.1 NM	3.4 NM	
CATEGORY		A		B		C		D
LPV	DA	298-½ 200 (200-½)						
LNAV/ VNAV	DA	517-¾ 419 (500-¾)						
LNAV	MDA	580-½ 482 (500-½)				580-1 482 (500-1)		
CIRCLING		580-1 482 (500-1)				600-1½ 502 (600-1½)		800-2¼ 702 (800-2¼)



SW-2, 31 DEC 2020 to 28 JAN 2021

SW-2, 31 DEC 2020 to 28 JAN 2021