

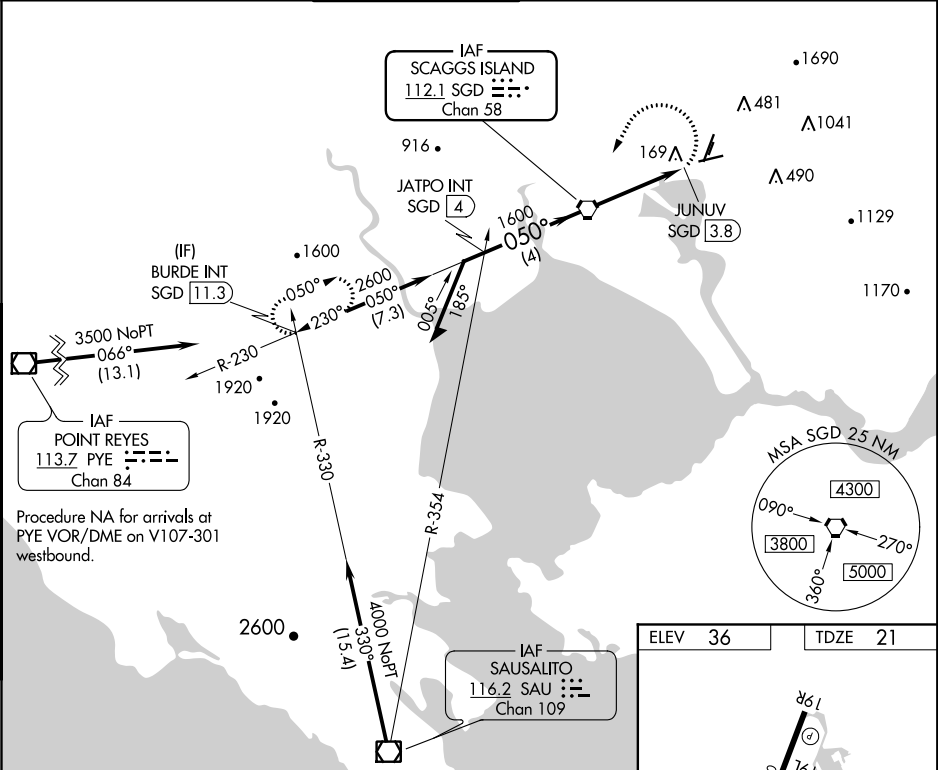
VORTAC	SGD	APP CRS	Rwy Idg	5008
112.1		050°	TDZE	21
Chan 58			Apt Elev	36

VOR RWY 6
NAPA COUNTY (APC)

⚠ Rwy 6 helicopter visibility reduction below 1 SM NA. Straight-in Rwy 6 NA at night, Circling Rwy 6 NA at night. Circling Cats A/B/C NA northeast of Rwys 19R and 24. Circling Cat D NA east of Rwy 19L-1R.

MISSED APPROACH: Climbing left turn to 3200 on heading 193° and SGD VORTAC R-230 to BURDE INT/SGD 11.3 DME and hold, continue climb-in-hold to 3200.

ATIS	OAKLAND CENTER	NAPA TOWER ★	GND CON	CLNC DEL	UNICOM
124.05	127.8 353.5	118.7 (CTAF) 0 257.8	121.7	127.85	122.95



Remain within 10 NM		SGD VORTAC	3200	SGD R-230	BURDE INT
3500		JATPO INT SGD 4	230°	hdg 193°	
2600			050°		
1600			3.32° TCH 55	JUNUV SGD 3.8	
4 NM		3.8 NM	0.6		
CATEGORY	A	B	C	D	
S-6	460-1	439 (500-1)	460-1¼	439 (500-1¼)	
CIRCLING	600-1 564 (600-1)	680-1 644 (700-1)	1280-3 1244 (1300-3)	1300-3 1264 (1300-3)	

ELEV 36 TDZE 21

Missed approach diagram details:

- 0.2% UP 920 X 1.50
- 0.4% UP 250 X 1.25
- 0.4% UP 5008 X 1.50
- 0.50° 4.4 NM from FAF
- Altitudes: 92, 161, 176, 24
- Obstacles: 92, 161, 176, 24

REIL Rwy 6

MIRL Rwys 6-24 and 1L-19R

FAF to MAP 3.8 NM

Knots	60	90	120	150	180
Min:Seq	3:48	2:32	1:54	1:31	1:16

SW-2, 31 DEC 2020 to 28 JAN 2021

SW-2, 31 DEC 2020 to 28 JAN 2021