

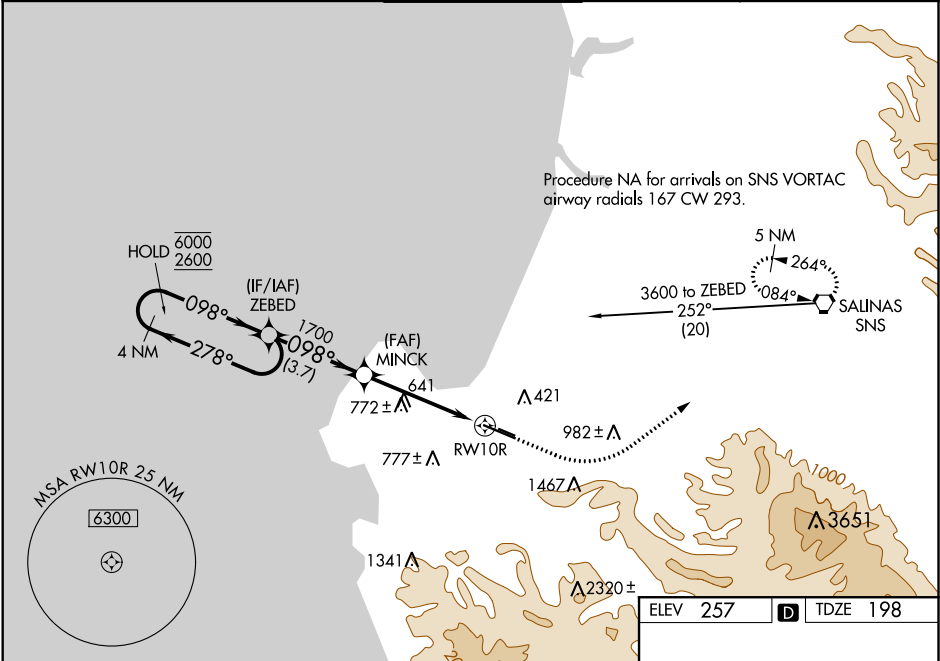
WAAS CH 69602 W10A	APP CRS 098°	Rwy Idg TDZE 198 Apt Elev 257
--	------------------------	---

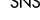
RNAV (GPS) RWY 10R

MONTEREY RGNL (MRY)

RNP APCH.	MALSR	MISSED APPROACH: Climb to 1000 then climbing left turn to 5000 direct SNS VORTAC and hold, continue climb-in-hold to 5000.
<div><div>▼</div><div>⚠</div></div> Circling NA south of Rwy 10R and 28L. For uncompensated Baro-VNAV systems, LNAV/VNAV NA below 0°C or above 54°C. For inop ALS, increase LPV visibility all Cats to 1½ SM, LNAV/VNAV visibility all Cats and LNAV Cat C/D to 2½ SM.	<div><div>AS</div><div></div></div>	

ATIS 119.25	NORCAL APP CON 133.0 251.15 (360°-150°) 127.15 307.125 (151°-359°)	MONTEREY TOWER ★ 118.4 (CTAF) 0 257.8	GND CON 120.875 348.6	CLNC DEL 135.45	UNICOM 122.95
-----------------------	--	--	---------------------------------	---------------------------	-------------------------



4 NM Holding Pattern		ZEBED		MINCK		1000 ↑		5000 ↘		SNS 		098° to RW10R	
6000 2600		←278° 098°→		098°		*2.4 NM to RW10R		*LNAV only		RW10R		101	
GP 3.00° TCH 45		1700		3.7 NM		2.3 NM		2.4 NM		1.4% UP 7175 X 150		1.7% UP 3503 X 60	
CATEGORY	A		B		C		D						
LPV DA			718-1½		520 (500-1½)								
LNAV/VNAV DA			789-1¾		591 (600-1¾)								
LNAV MDA	980/24 782 (800-½)		980/40 782 (800-¾)		980-1¾ 782 (800-1¾)						MIRL Rwy 10L-28R HIRL Rwy 10R-28L ① REIL Rwy 28L ① REIL Rwy 10L and 28R		
CIRCLING	980-1 723 (800-1)		980-1¼ 723 (800-1¼)		1280-3 1023 (1100-3)		NA						

SW-2, 31 DEC 2020 to 28 JAN 2021

SW-2, 31 DEC 2020 to 28 JAN 2021