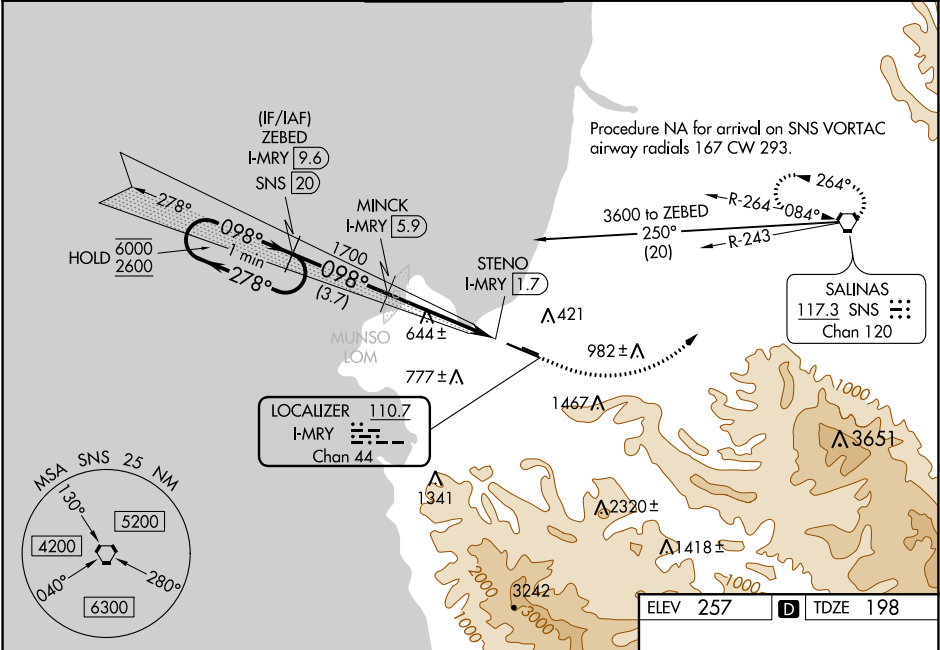


LOC/DME I-MRY	APP CRS	Rwy Idg	7000
110.7	098°	TDZE	198
Chan 44		Apt Elev	257

ILS or LOC RWY 10R
MONTEREY RGNL (MRY)

DME required.	MALSR	MISSED APPROACH: Climb to 600 then climbing left turn to 5000 on heading 030° and on SNS VORTAC R-243 to SNS VORTAC and hold, continue climb-in-hold to 5000. # Missed approach requires minimum climb of 265 feet per NM to 1360.
⚠ Circling NA south of Rwy 10R-28L. For inop ALS, increase S-ILS 10R all Cats visibility to RVR 6000, and increase S-LOC 10R Cat C and D visibility to 2 SM.		

ATIS 119.25	NORCAL APP CON 133.0 251.15 (360°-150°) 127.15 307.125 (151°-359°)	MONTEREY TOWER ★ 118.4 (CTAF) 0 257.8	GND CON 120.875 348.6	CLNC DEL 135.45	UNICOM 122.95
-----------------------	--	--	---------------------------------	---------------------------	-------------------------



ILS unusable from 1.7 DME inbound.	One Minute Holding Pattern	ZEBED I-MRY [9.6]	MINCK I-MRY [5.9]	600	5000	SNS	SNS
				hdg 030°		R-243	
6000 2600	278°	098°	098°	1700	*I-MRY [3.4]	*LOC only	098° 4.7 NM from FAF
GS 3.00° TCH 45					STENO I-MRY [1.7]		100' 1.4% UP 3503 X 60 1.7% UP 7175 X 150 281°
		3.7 NM	2.5 NM	1.7 NM	0.5		
CATEGORY	A	B	C	D			
S-ILS 10R#		398/24	200 (200-½)				
S-ILS 10R		583/35	385 (400-½)				
S-LOC 10R		920/24	722 (700-½)	920-1½	722 (700-1½)		
CIRCLING	920-1	663 (700-1)	1280-3	1023 (1100-3)	NA		
						MIRL Rwy 10L-28R HIRL Rwy 10R-28L REIL Rwy 28L REIL Rwy 10L and 28R	

SW-2, 31 DEC 2020 to 28 JAN 2021

SW-2, 31 DEC 2020 to 28 JAN 2021