

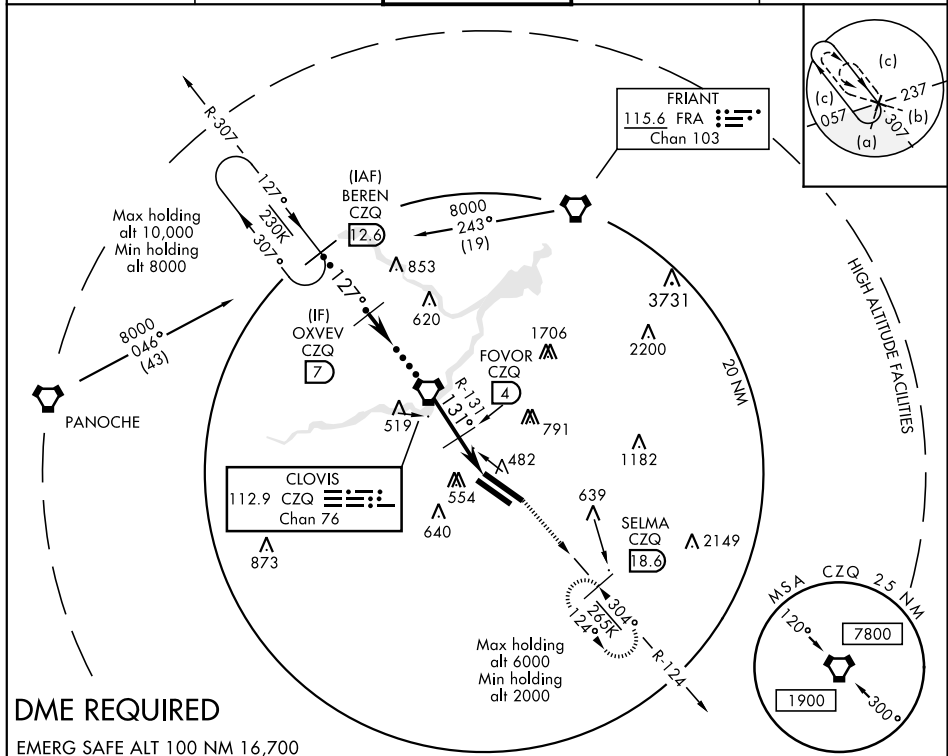
HI-TACAN RWY 11L

VORTAC CZQ 112.9 Chan 76	APCH CRS 131°	Rwy Idg TDZE Arpt Elev	11L 9539 11L 336 336	11R 8008 11R 333 333
--	-------------------------	------------------------------	---	---

JAL-162 [USAF] FRESNO YOSEMITE INTL (KFAT)

<p>MISSED APPROACH: Climbing left turn to 2000 on CZQ VORTAC R-124 to SELMA / 18.6 DME and hold.</p>	
---	--

ATIS 121.35 273.6	FRESNO APP CON 119.6 351.95	FRESNO TOWER 118.2 251.1	GND CON 121.7 348.6	CLNC DEL 124.35 348.6
-----------------------------	---------------------------------------	------------------------------------	-------------------------------	---------------------------------



CATEGORY	C	D	E
S-11L	800-1 $\frac{3}{8}$	464	(500-1 $\frac{3}{8}$)
SIDESTEP 11R	800-1 $\frac{1}{2}$ 467 (500-1 $\frac{1}{2}$)	800-2	467 (500-2)
CIRCLING	920-1 $\frac{1}{2}$ 584 (600-1 $\frac{1}{2}$)	920-2 584 (600-2)	1140-2 $\frac{3}{4}$ 804 (900-2 $\frac{3}{4}$)

BEREN
CZQ R-307
12.6

OXVEV
7

VORTAC

FOVOR
4

SELMA
CZQ
R-124
18.6

ELEV 336

131° 7.3 NM
from FAF

Rwy 29R Idg 9227'

362

371

391

404

363

445

2539 x 150

8008 x 150

REIL Rwy 11L and 11R

HIRL Rwy 11L-29R

MIRL Rwy 11R-29L

TDZL/CL Rwy 29R

2000

10,000

8000

127°

4800

2700

137°

1420

7.3

3.00°

TCH 55

4 NM

3.3 NM

HI-TACAN RWY 11L