

WAAS CH <b>90537</b> <b>W03A</b>	APP CRS <b>032°</b>	Rwy Idg TDZE Apt Elev	<b>5598</b> <b>5157</b> <b>5193</b>
--	------------------------	-----------------------------	---

RNAV (GPS) RWY 3

BLAKE FIELD (AJZ)

RNP APCH.

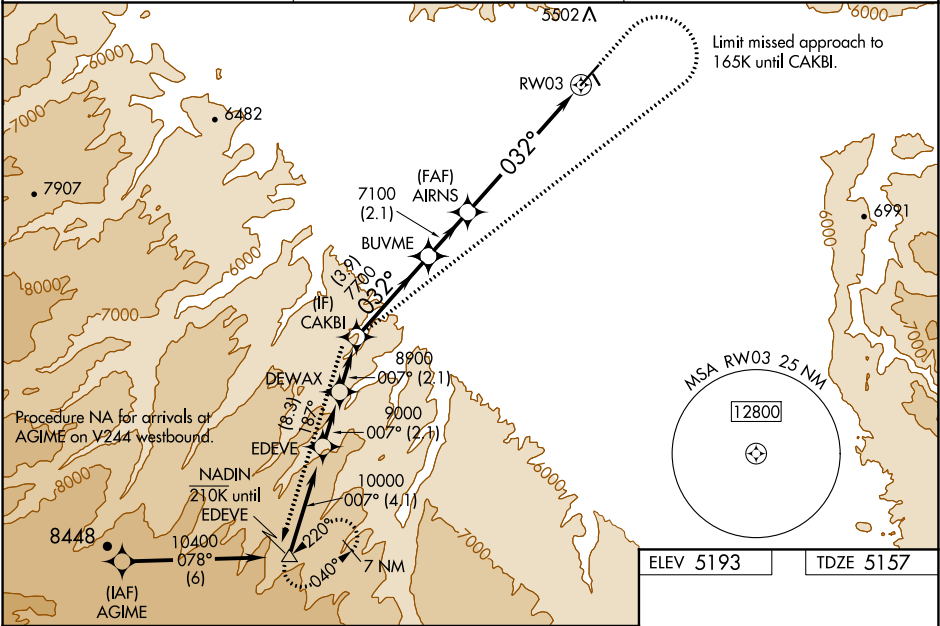
▼

▲

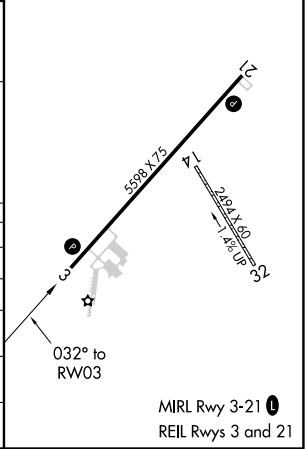
Baro-VNAV NA when using Montrose altimeter setting. For uncompensated Baro-VNAV systems, procedure NA below -25°C or above 54°C. When local altimeter setting not received, use Montrose altimeter setting: increase #LPV DA to 5529 feet and visibility all Cats ¾ SM, increase LPV DA to 5670 feet and visibility all Cats ½ SM, increase LNAV/VNAV DA to 5979 feet and visibility all Cats ½ SM. Increase all MDA 140 feet and visibility Cat B ¼ SM, Cat C ½ SM and Circling Cat A ¼ SM. VDP NA when using Montrose altimeter setting. Circling NA to Rwy 14 and 32.  
# Missed approach requires minimum climb of 250 feet per NM to 6900.

MISSED APPROACH: Climb to 7000 then climbing right turn to 11600 direct CAKBI and on track 187° to NADIN and hold, continue climb-in-hold to 11600.

AWOS-3 <b>134.0</b>	DENVER CENTER <b>127.1 343.65</b>	UNICOM <b>122.8 (CTAF) 0</b>
------------------------	--------------------------------------	---------------------------------



CAKBI		BUUME		AIRNS		7000 ↑		11600 ↷		CAKBI ✧		tr 187° ↻		NADIN △	
8900		032°		7700		7100		* 2.2 NM to RW03		* LNAV only		RW03			
GP 3.00° TCH 38				7100											
		3.9 NM		2.1 NM		3.9 NM		2.2 NM							
CATEGORY		A		B		C						D			
#LPV DA		5407-1		250 (300-1)								NA			
LPV DA		5548-1½		391 (400-1½)								NA			
LNAV/VNAV DA		5857-2		700 (700-2)								NA			
LNAV MDA		5840-1		683 (700-1)		5840-2 683 (700-2)						NA			
CIRCLING		5900-1 707 (800-1)		6340-1½ 1147 (1200-1½)		6680-3 1487 (1500-3)						NA			



SW-1, 31 DEC 2020 to 28 JAN 2021

SW-1, 31 DEC 2020 to 28 JAN 2021