

APP CRS	Rwy Idg	N/A
126°	TDZE	N/A
	Apt Elev	5940

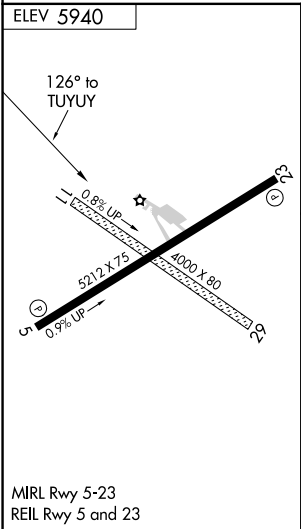
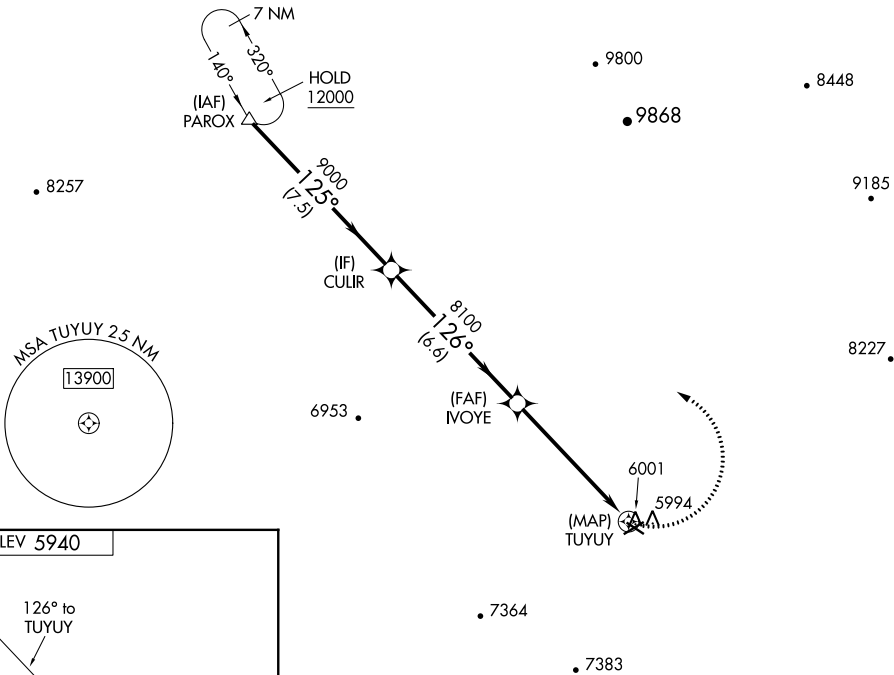
RNAV (GPS)-A
HOPKINS FIELD (AIB)

▼ NA	DME/DME RNP- 0.3 NA. If local altimeter setting not received, procedure NA. Circling to Rwys 11/29 NA.	MISSED APPROACH: Climbing left turn to 12000 direct PAROX and hold, continue climb-in-hold to 12000.
---------	--	--

AWOS-3 132.525	DENVER CENTER 125.35 354.05	UNICOM 122.8 (CTAF)
-------------------	--------------------------------	------------------------

All arrivals via V244 descend to 12000 in PAROX holding pattern before departing PAROX.
NoPT for arrival at PAROX on V391 southbound.

△ 9752 ±



PAROX	CULIR	IVOYE	TUYUY
12000	9000	8100	
Procedure Turn NA			
7.5 NM	6.6 NM	5.8 NM	
CATEGORY	A	B	C
CIRCLING	6600-1	660 (700-1)	6600-1 3/4 660 (700-1 3/4)