

WAAS CH 45635 W33A	APP CRS 330°	Rwy Idg TDZE 7926 Apt Elev 7950	8303
--	------------------------	---	-------------

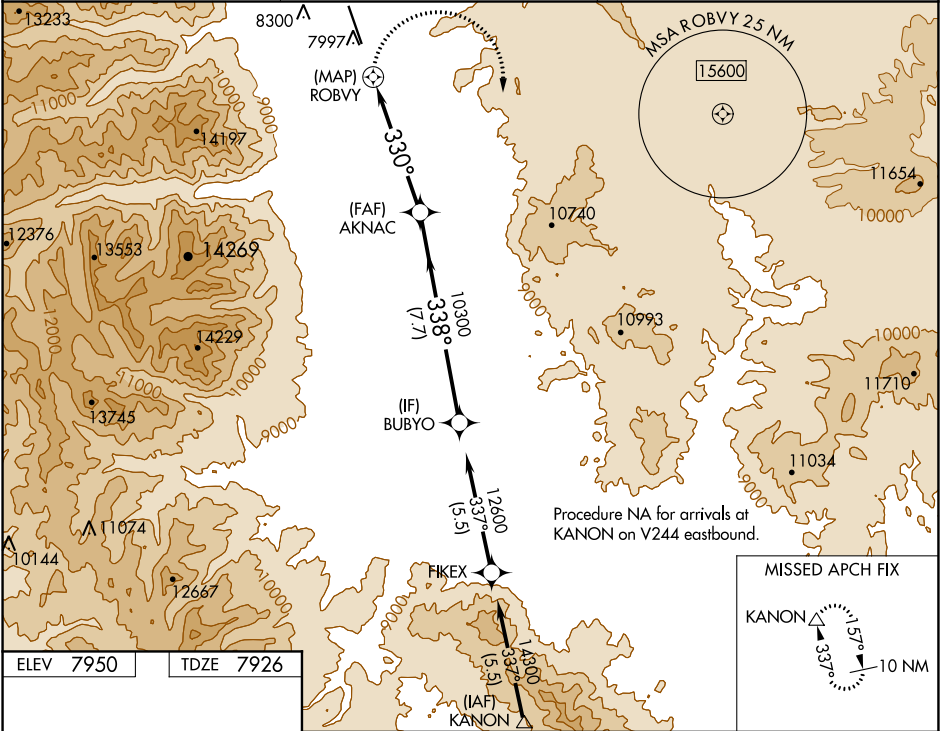
RNAV (GPS) RWY 33
CENTRAL COLORADO RGNL (A/EJ)

NA
-22°C

Circling NA northeast of Rwy 15-33. DME/DME RNP-0.3 NA.
When local altimeter setting not received, use Salida altimeter setting
and increase all MDA 100 feet. VDP NA with Salida altimeter setting.
#Missed approach requires minimum climb of 425 feet per NM to 14100.

MISSED APPROACH: Climbing right
turn to 16000 direct KANON and hold,
continue climb-in-hold to 16000.

AWOS-3 132.925	DENVER CENTER 119.85 363.15	UNICOM 122.8 (CTAF) 0
--------------------------	---------------------------------------	---------------------------------



16000 KANON		VGSI and descent angles not coincident (VGSI Angle 3.00/TCH 41).		BUBYO	
*LNAV only.		*1.8 NM to ROBKY		AKNAC	
ROBKY		330°		10300	
1.3		1.8 NM		3.4 NM	
A		B		C	
#LP	MDA	8960-1½	1034 (1100-1½)	8960-3	NA
LP	MDA	9840-1½	1914 (1900-1½)	9840-3	NA
#LNAV	MDA	9300-1½	1374 (1400-1½)	9300-3	NA
LNAV	MDA	9980-1½	2054 (2100-1½)	9980-3	NA
CIRCLING	MDA	9980-1½	2030 (2100-1½)	9980-3	NA

SW-1, 31 DEC 2020 to 28 JAN 2021

SW-1, 31 DEC 2020 to 28 JAN 2021