

WAAS CH 99307 W16A	APP CRS 173°	Rwy Idg 12000 TDZE 5357 Apt Elev 5434
--	------------------------	--

RNAV (GPS) Y RWY 16L
DENVER INTL (DEN)

▼ For uncompensated Baro-VNAV systems, LNAV/VNAV NA below -25°C (-13°F) or above 45°C (114°F). Simultaneous approach authorized with Rwy 17 L/R. DME/DME RNP -0.3 NA. LNAV procedure NA during simultaneous operations. For inoperative RVR, increase LNAV/VNAV all Cats, and LNAV Cats C/D visibility to RVR 4500. Use of FD or AP providing RNAV track guidance required during simultaneous operations.

MALSR



MISSED APPROACH: Climb to 5900 then climbing right turn to 10000 direct BINBE and hold, continue climb-in-hold to 10000.




D-ATIS		DENVER APP CON		DENVER TOWER		GND CON		CLNC DEL		CPDLC
ARR	125.6 379.9	119.3 307.3	120.35 379.3	135.3	351.95	127.5	379.175	118.75		
DEP	134.025	(NORTH)	(SOUTH)							

A6260

RADAR REQUIRED

MISSED APCH FIX



5900	10000	BINBE
		

VGSI and RNAV glidepath not coincident (VGSI Angle 3.00/TCH 71).

JOBBOB

*LNAV only

LUWEE
1.3 NM to
RW16L

LEETS
7000

NINVE
8000

TCCGCC
9000

* 0.8 NM to
RW16L

RW16L

5820*

7000

173°

GP 3.00%

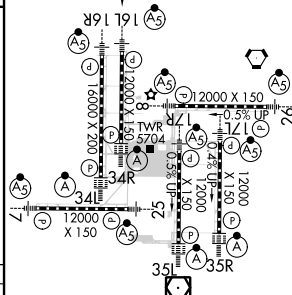
TCH 60

0.8 0.5 3.7 NM 3.2 NM 3.9 NM 3.9 NM

CATEGORY		A	B	C	D
LPV	DA	5557/18 200 (200-½)			
LNAV/ VNAV	DA	5647/24 290 (300-½)			
LNAV	MDA	5660/24 303 (300-½)			

ELEV 5434	D	TDZE 5357
-----------	----------	-----------

D	TDZE
---	------

173° to
RW16L

HIRL all Rwys
TDZ/CL Rwys 7, 16L, 16R, 17R,
26, 34L, 34R, 35L, 35R

RNAV (GPS) Y RWY 16L