

APP CRS
173°

Rwy Idg
12000

TDZE
5339

Apt Elev
5434

RNAV (RNP) Z RWY 17L

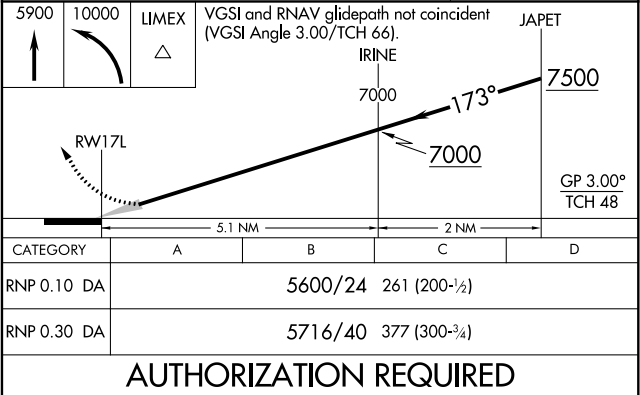
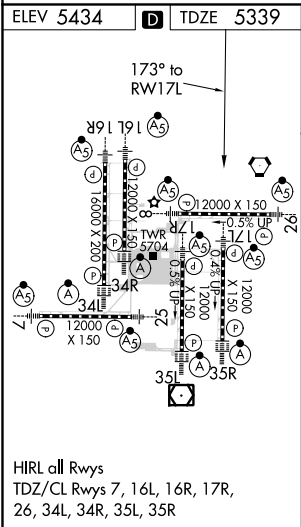
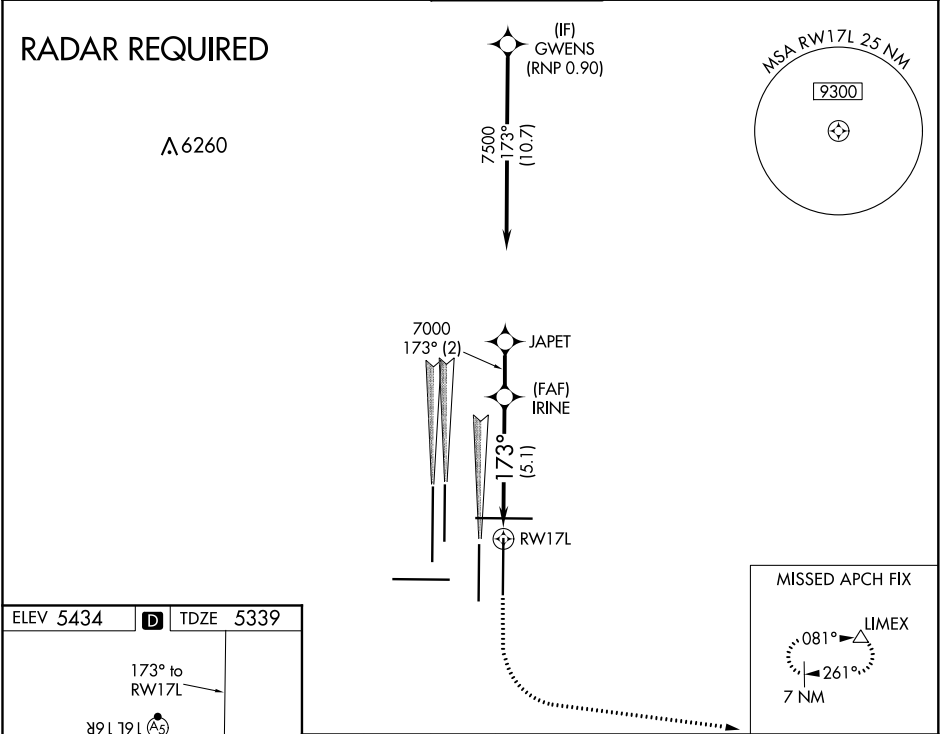
DENVER INTL (DEN)

GPS required. For inoperative MALS, increase RNP 0.10 all Cats visibility to RVR 4500 and RNP 0.30 all Cats visibility to RVR 6000. Simultaneous approach authorized. Use of FD or AP providing RNAV track guidance required during simultaneous operations. For uncompensated Baro-VNAV systems, procedure NA below -25°C (-13°F) or above 48°C (118°F).

MALS

MISSED APPROACH: Climb to 5900 then climbing left turn to 10000 direct LIMEX and hold.

D-ATIS	DENVER APP CON			DENVER TOWER	GND CON	CLNC DEL	CPDLC
ARR 125.6 379.9	119.3	307.3	120.35 379.3	132.35 239.275	121.85 377.1	118.75	
DEP 134.025	(NORTH)			(SOUTH)			



SW-1, 31 DEC 2020 to 28 JAN 2021

SW-1, 31 DEC 2020 to 28 JAN 2021