

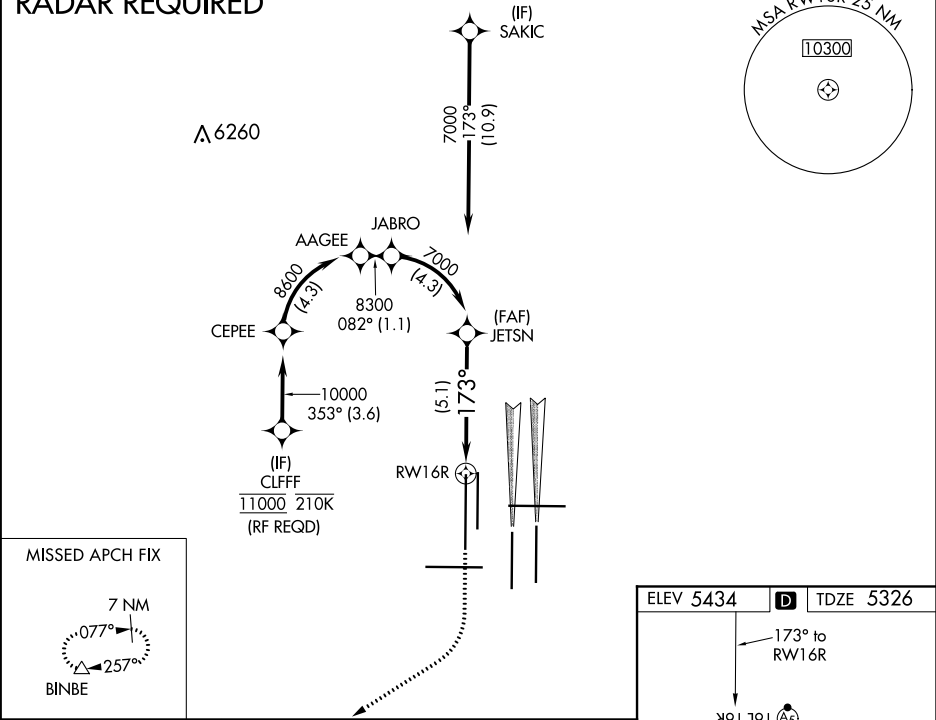
APP CRS 173°	Rwy Idg 16000
	TDZE 5326
	Apt Elev 5434

RNAV (RNP) Z RWY 16R
DENVER INTL (DEN)

GPS required. Simultaneous approach authorized. For uncompensated Baro-VNAV systems, procedure NA below -25°C (-13°F) or above 46°C (116°F). Use of FD or AP providing RNAV track guidance required during simultaneous operations.	MALSR 	MISSED APPROACH: Climb to 5900 then climbing right turn to 10000 direct BINBE and hold, continue climb-in-hold to 10000.
---	------------------	--

D-ATIS ARR 125.6 379.9 DEP 134.025	DENVER APP CON 119.3 307.3 120.35 379.3 (NORTH) (SOUTH)	DENVER TOWER 135.3 351.95	GND CON 127.5 379.175	CLNC DEL 118.75	CPDLC
--	--	-------------------------------------	---------------------------------	---------------------------	-------

RADAR REQUIRED



5900	10000	BINBE	VGSI and RNAV glidepath not coincident (VGSI Angle 3.00/TCH 71).	JETSN
				7000
RWY 16R				
See planview for multiple IF locations.				
GP 3.00° TCH 55				
-5.1 NM				
CATEGORY	A	B	C	D
RNP 0.10 DA	5586/50 260 (200-1)			
RNP 0.30 DA	5651/50 325 (300-1)			
AUTHORIZATION REQUIRED				

