

APP CRS 173°	Rwy Idg	12000
	TDZE	5357
	Apt Elev	5434

RNAV (RNP) Z RWY 16L

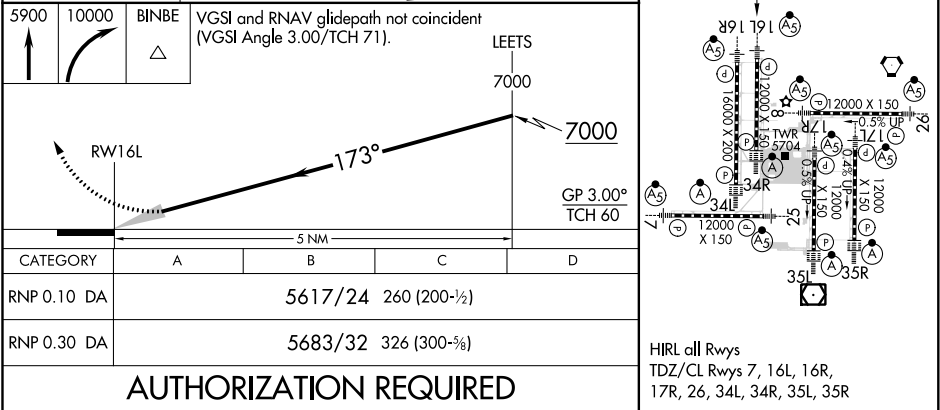
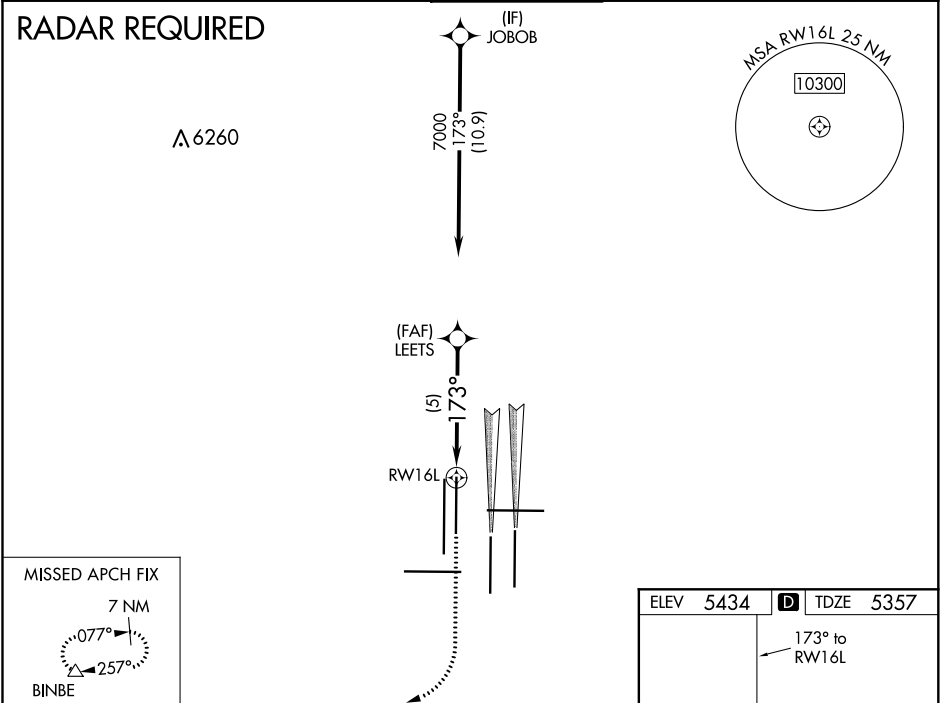
DENVER INTL (DEN)

⚠ For uncompensated Baro-VNAV systems, procedure NA below -25°C (-13°F) or above 45°C (114°F). GPS required. For inoperative MALSR, increase RNP 0.10 all Cats visibility to RVR 4000 and RNP 0.30 all Cats visibility to RVR 5000. Simultaneous approach authorized. Use of FD or AP providing RNAV track guidance required during simultaneous operations.

MALSR

MISSED APPROACH: Climb to 5900 then climbing right turn to 10000 direct BINBE and hold, continue climb-in-hold to 10000.

D-ATIS		DENVER APP CON		DENVER TOWER 135.3 351.95	GND CON 127.5 379.175	CLNC DEL 118.75	CPDLC
ARR	125.6 379.9	119.3 307.3	120.35 379.3				
DEP	134.025	(NORTH)	(SOUTH)				



SW-1, 31 DEC 2020 to 28 JAN 2021

SW-1, 31 DEC 2020 to 28 JAN 2021