

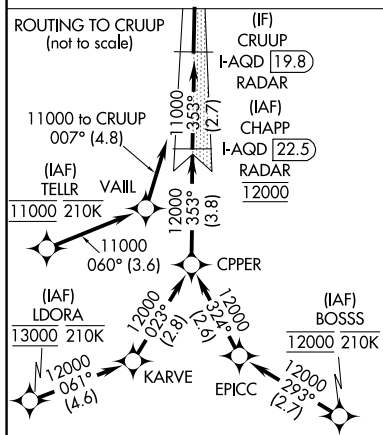
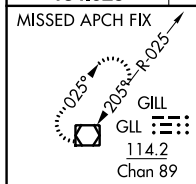


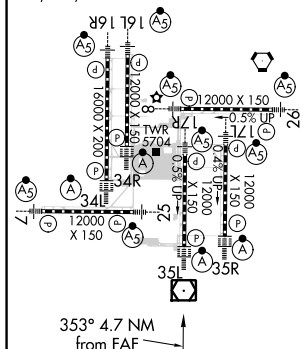
LOC/DME I-AQD 108.5 Chn 22	APP CRS 353°	Rwy Idg 12000 TDZE 5434 Apt Elev 5434
------------------------------------------------	------------------------	------------------------------------------------------------------

ILS or LOC RWY 35L
DENVER INTL (DEN)

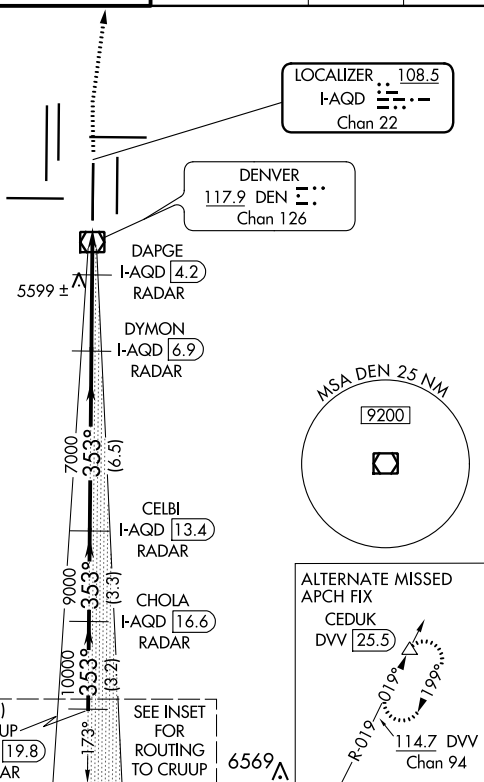
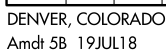
DME or RADAR required for LOC only. RNAV 1-GPS or RADAR required for procedure entry.				ALSF-2 		MISSED APPROACH: Climb to 10000 then right turn direct GLL VOR/DME and hold.	
 Simultaneous approach authorized.							
D-ATIS ARR 125.6 379.9 DEP 134.025		DENVER APP CON 119.3 307.3 120.35 379.3 (NORTH) (SOUTH)		DENVER TOWER 133.3 322.45		GND CON 121.85 377.1 CLNC DEL 118.75	
						CPDLC	



ELEV 5434	D	TDZE 5434
HIRL all Rwy's		
TDZ/CL Rwy's 7, 16L, 16R, 17R, 26, 34L, 34R, 35L, 35R		



Knots		60	90	120	150	180
Min:Sec		4:42	3:08	2:21	1:53	1:34



VGS and ILS glidepath not coincident (VGS Angle 3.00/TCH 71).

CATEGORY	A	B	C	D
S-ILS 35L		5634/18	200 (200-½)	
S-LOC 35L	5760/24	326 (400-½)	5760/26	326 (400-½)