

LOC/DME I-BXP <b>110.15</b> Chan <b>38</b> (Y)	APP CRS <b>173°</b>	Rwy Idg <b>12000</b> TDZE <b>5339</b> Apt Elev <b>5434</b>
--	------------------------	--

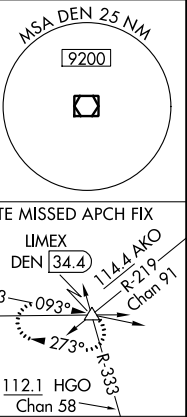
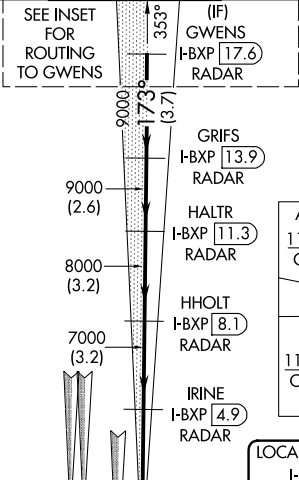
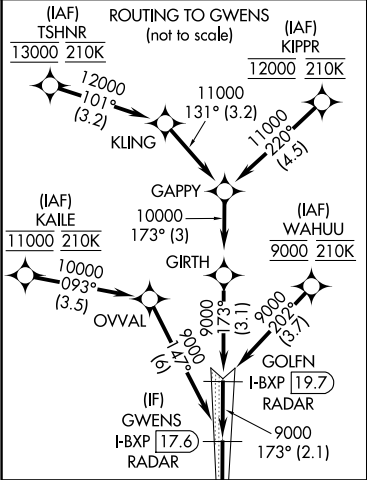
ILS or LOC RWY 17L  
DENVER INTL (DEN)

For inoperative MALS, increase S-LOC Cats C/D visibility to RVR 4500.  
S-LOC 17L DME or RADAR required. Simultaneous approaches  
authorized with Rwy 17R and 16L/16R.  
# RVR 1800 authorized with the use of FD or AP or HUD to DA.

MALS  
AS

MISSED APPROACH: Climb to 5900  
then climbing left turn to 10000 on  
heading 120° and FQF VORTAC R-078  
to UMEX INT/FQF 31.9 DME and hold.

D-ATIS ARR <b>125.6 379.9</b> DEP <b>134.025</b>	DENVER APP CON <b>119.3 307.3 120.35 379.3</b> (NORTH) (SOUTH)	DENVER TOWER <b>132.35 239.275</b>	GND CON <b>121.85 377.1</b>	CLNC DEL <b>118.75</b>	CPDLC
--	--	---------------------------------------	--------------------------------	---------------------------	-------



A 5824

DENVER  
117.9 DEN  
Chan 126

ELEV 5434 TDZE 5339

HIRL all Rwys  
TDZ/CL Rwys 7, 16L, 16R,  
17R, 26, 34L, 34R, 35L, 35R

FAF to MAP 5.1 NM

Knots	60	90	120	150	180
Min:Sec	5:06	3:24	2:33	2:02	1:42

RADAR or GPS  
REQUIRED

5900 10000 FQF R-078 UMEX

VGSI and ILS glidepath not coincident  
(VGSI Angle 3.00/TCH 66).

\*LOC only

IRINE HALTR GRIFS GWENS  
I-BXP I-BXP I-BXP I-BXP  
[4.9] [11.3] [13.9] [17.6]  
RADAR RADAR RADAR RADAR

HHOLT  
I-BXP [8.1]  
RADAR

9000 173° 9000

7000 8000 9000

GS 3.00° TCH 48

0.7 4.4 NM 3.2 NM 3.2 NM 2.6 NM 3.7 NM

CATEGORY	A	B	C	D
S-ILS 17L	# 5539/24 200 (200-½)			
S-LOC 17L	5620/24 281 (200-½)			

SW-1, 31 DEC 2020 to 28 JAN 2021

SW-1, 31 DEC 2020 to 28 JAN 2021