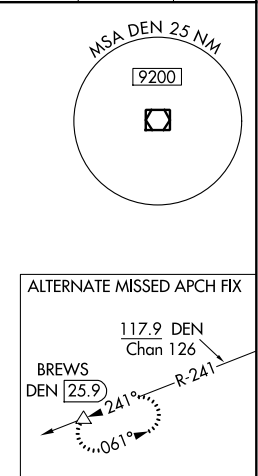
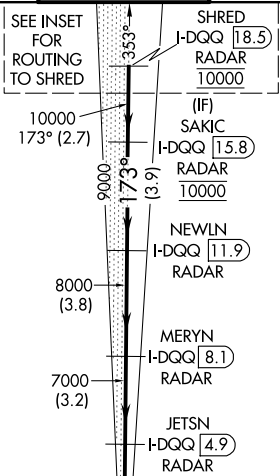
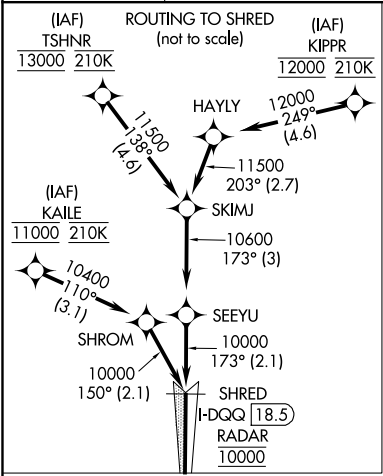


| | | |
|----------------|-------------|----------------------|
| LOC/DME I-DQQ | APP CRS | Rwy Idg |
| 111.9 | 173° | 16000 |
| Chan 56 | | TDZE 5326 |
| | | Apt Elev 5434 |

ILS or LOC RWY 16R
DENVER INTL (DEN)

| | | |
|--|-------|--|
| For inoperative MALSR, increase S-LOC Cat C/D visibility to RVR 4500. Simultaneous approach authorized with Rwy 17L and 17R. DME required. | MALSR | MISSED APPROACH: Climb to 5900 then climbing right turn to 12000 on heading 218° and on FGF VORTAC R-254 to BREWS/FQF 26 DME and hold. |
|--|-------|--|

| | | | | | |
|--|--|---------------------|----------------------|---------------|-------|
| D-ATIS | DENVER APP CON | DENVER TOWER | GND CON | CLNC DEL | CPDLC |
| ARR 125.6 379.9 DEF 134.025 | 119.3 307.3 120.35 379.3 (NORTH) (SOUTH) | 135.3 351.95 | 127.5 379.175 | 118.75 | |



RADAR or GPS REQUIRED

