

LOC/DME I-LTT	APP CRS	Rwy Idg	12000
111.1	173°	TDZE	5357
Chan 48		Apt Elev	5434

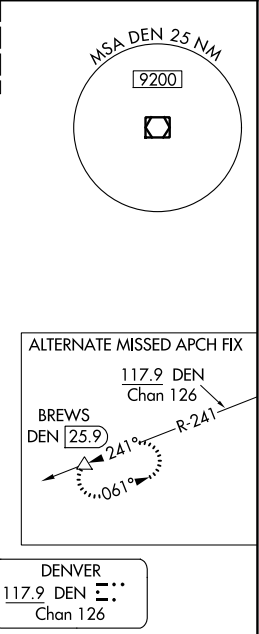
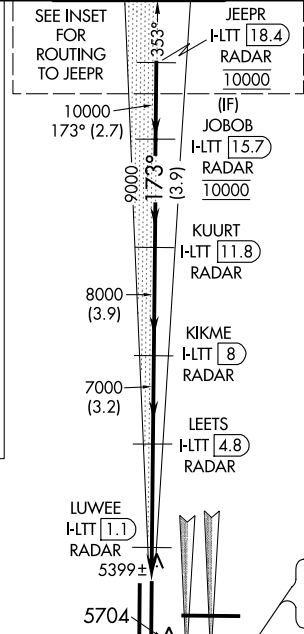
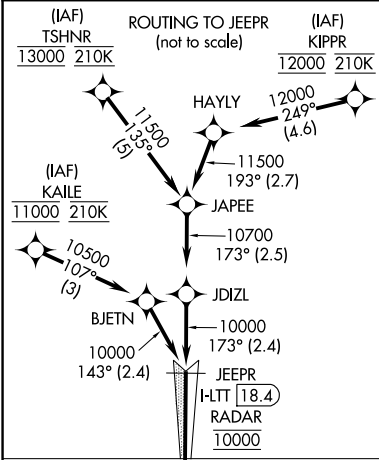
ILS or LOC RWY 16L  
DENVER INTL (DEN)

Simultaneous approach authorized with Rwy 17L/17R. DME required. S-LOC 16L DME or RADAR required. For inoperative MALSR, increase S-LOC Cat C/D visibility to RVR 4500.

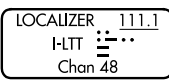
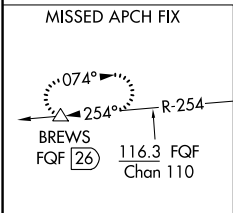
MALSR

MISSED APPROACH: Climb to 5900 then climbing right turn to 12000 on heading 218° and on FQF VORTAC R-254 to BREWS/FQF 26 DME and hold.

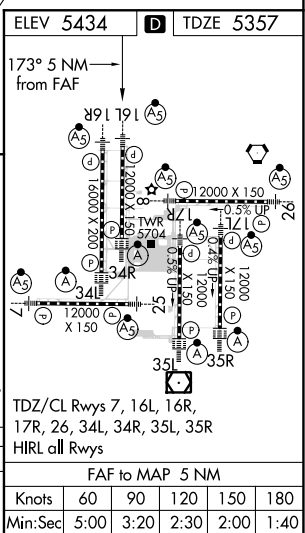
D-ATIS	DENVER APP CON	DENVER TOWER	GND CON	CLNC DEL	CPDLC
ARR 125.6 379.9	119.3 307.3 120.35 379.3	135.3 351.95	127.5 379.175	118.75	
DEP 134.025	(NORTH) (SOUTH)				



RADAR or GPS REQUIRED



5900	12000	FQF	BREWS	VGSI and ILS glidepath not coincident (VGSI Angle 3.00/TCH 71).
↑	hdg 218°	R-254	△	
*LOC only				
I-LTT 0.2	I-LTT 0.6	I-LTT 1.1	I-LTT 4.8	I-LTT 11.8
DME ANT.	RADAR	RADAR	RADAR	RADAR
0.8	0.5	3.7 NM	3.2 NM	3.9 NM
CATEGORY	A	B	C	D
S-ILS 16L	5557/18	200 (200-½)		
S-LOC 16L	5660/24	303 (300-½)		



SW-1, 31 DEC 2020 to 28 JAN 2021

SW-1, 31 DEC 2020 to 28 JAN 2021