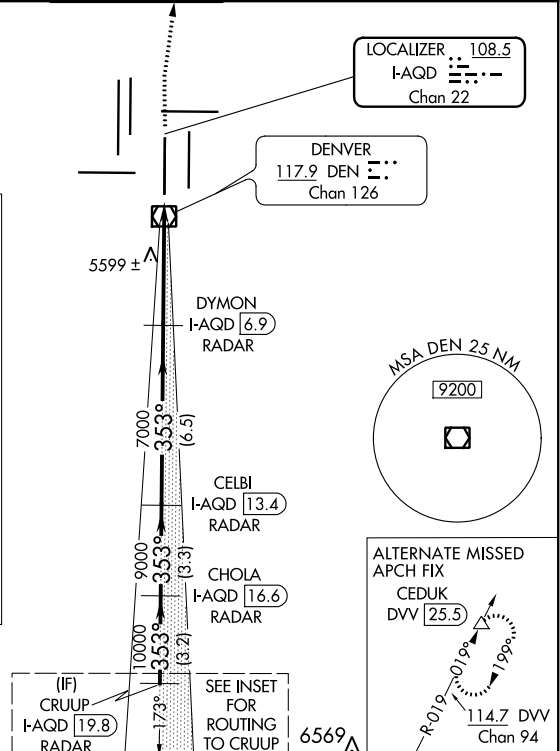
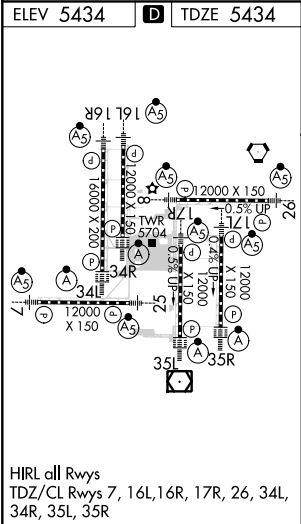
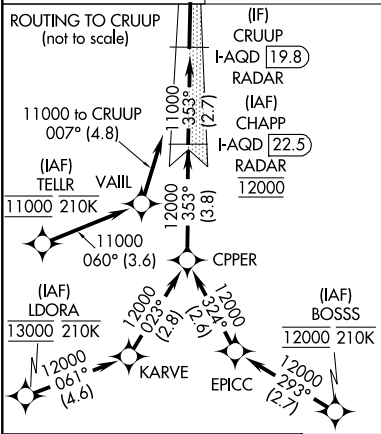
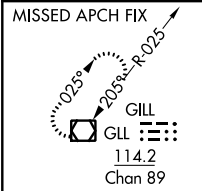

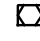


LOC/DME I-AQD 108.5 Chan 22	APP CRS 353°	Rwy Idg 12000 TDZE 5434 Apt Elev 5434
---	------------------------	--

ILS RWY 35L (CAT II & III)
DENVER INTL (DEN)

RNAV 1-GPS or RADAR required for procedure entry.				ALSF-2 	MISSED APPROACH: Climb to 10000 then right turn direct GLL VOR/DME and hold.	
Simultaneous approach authorized. CAT II: RVR 1000 authorized with specific OPSPEC, MSPEC, or LOA approval and use of autoland or HUD to touchdown.						
D-ATIS ARR 125.6 379.9 DEF 134.025	DENVER APP CON 119.3 307.3 120.35 379.3 (NORTH) (SOUTH)		DENVER TOWER 133.3 322.45	GND CON 121.85 377.1	CLNC DEL 118.75	CPDLC



VGSI and ILS glidepath not coincident (VGSI Angle 3.00/TCH 71).					<div>10000 ↑</div>		<div></div>		<div>GLL </div>		
CRUUP I-AQD <u>19.8</u> RADAR		CHOLA I-AQD <u>16.6</u> RADAR		CELBI I-AQD <u>13.4</u> RADAR		DYMON I-AQD <u>6.9</u> RADAR					
11000		353°		10000		9000		7000		7000	
GS 3.00° TCH 57											
3.2 NM		3.3 NM		6.5 NM		4.7 NM		1.101'			
CATEGORY		A		B		C		D			
S-ILS 35L		CAT II RA 115/12 100 DA 5534									
S-ILS 35L		CAT III RVR 03									
CATEGORY II & III ILS - SPECIAL AIRCREW & AIRCRAFT CERTIFICATION REQUIRED											

SW-1, 31 DEC 2020 to 28 JAN 2021

SW-1, 31 DEC 2020 to 28 JAN 2021