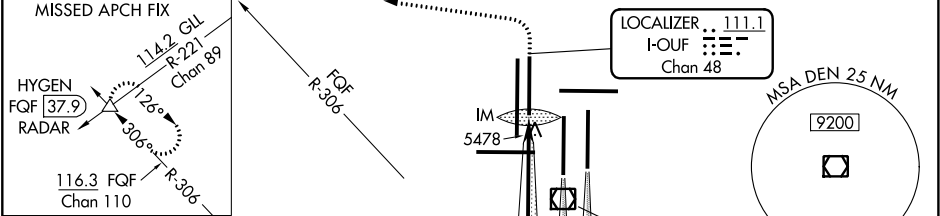


LOC/DME I-OUF 111.1 Chan 48	APP CRS 353°	Rwy Idg 12000 TDZE 5354 Apt Elev 5434
---	------------------------	--

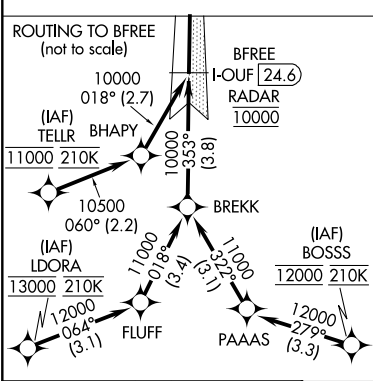
ILS RWY 34R (SA CAT I)
DENVER INTL (DEN)

Requires specific OPSPEC, MSPEC or LOA approval and use of HUD to DH. Simultaneous approach authorized with Rwy 35L/R.	ALSIF-2 	MISSED APPROACH: Climb to 5800 then climbing left turn to 10000 on heading 270° and on FQF VORTAC R-306 to HYGEN/FQF 37.9 DME/RADAR and hold.
--	-------------	---

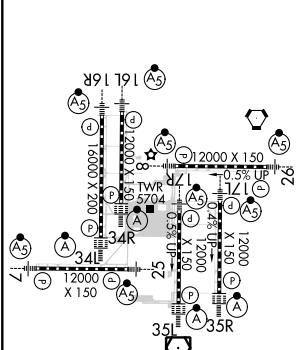
D-ATIS ARR 125.6 379.9 DEP 134.025	DENVER APP CON 119.3 307.3 120.35 379.3 (NORTH) (SOUTH)	DENVER TOWER 135.3 351.95	GND CON 127.5 379.175	CLNC DEL 118.75	CPDLC
--	--	-------------------------------------	---------------------------------	---------------------------	-------



RADAR or GPS REQUIRED



ELEV 5434	D	TDZE 5354
-----------	---	-----------



GS 3.00° TCH 59	2.6 NM	3.2 NM	4.7 NM	6.9 NM	5 NM	1071'
CATEGORY	A	B	C	D		
S-ILS 34R	RA 175/14 150 DA 5504					
SA CATEGORY I ILS - SPECIAL AIRCREW & AIRCRAFT CERTIFICATION REQUIRED						

SW-1, 31 DEC 2020 to 28 JAN 2021

SW-1, 31 DEC 2020 to 28 JAN 2021