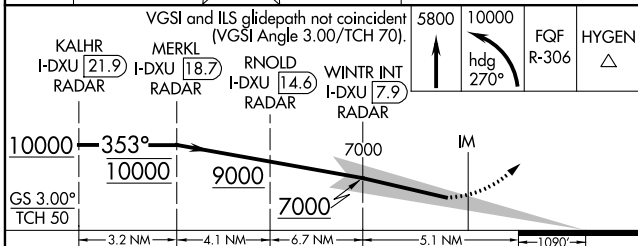
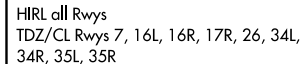


ILS RWY 34L (SA CAT I)  
DENVER INTL (DEN)

ALSF-2

**MISSED APPROACH:** Climb to 5800 then climbing left turn to 10000 on heading 270° and on FQF VORTAC R-306 to HYGEN/FQF 37.9 DME/RADAR and hold.



CATEGORY	A	B	C	D
S-ILS 34L	RA 148/14 150 DA 5477			

SA CATEGORY I ILS - SPECIAL AIRCREW  
& AIRCRAFT CERTIFICATION REQUIRED