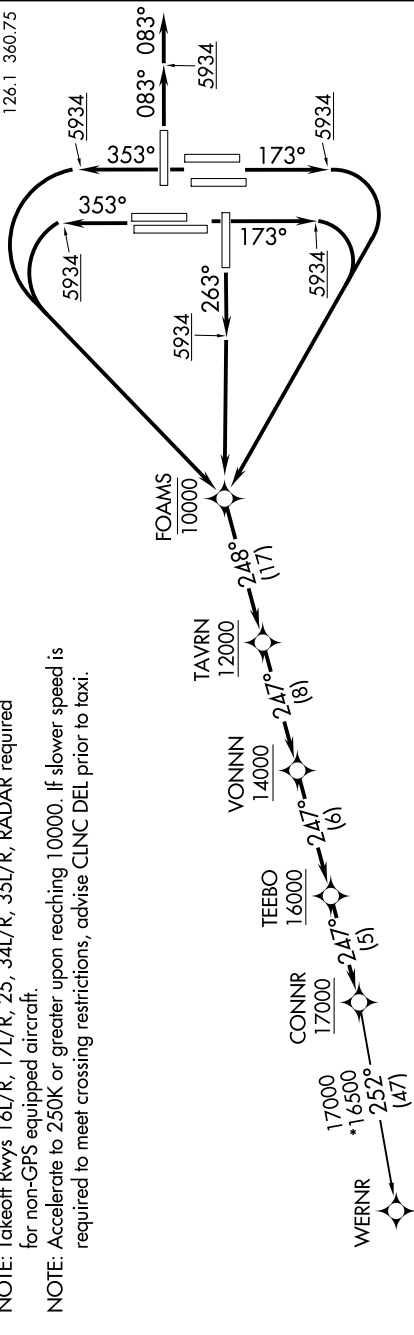


TOP ALTITUDE:
FL230

NOTE: DME/DME/IRU or GPS required.
NOTE: RNAV 1.
NOTE: Turboprops only.
NOTE: Takeoff Rwy 8 RADAR required.
NOTE: Takeoff Rwys 16L/R, 17L/R, 25, 30
for non-GPS equipped aircraft.
NOTE: Accelerate to 250K or greater upon
required to meet crossing restrictions.



TAKEOFF MINIMUMS
 Rwy 7, 26: NA - ATC.
 Rwy 8: Standard.
 Rwy 16L: Standard with
 Rwy 16R: Standard with
 Rwy 17L: Standard with
 Rwy 17R: Standard with
 Rwy 25: Standard with
 Rwy 34L/R: Standard
 Rwy 35L/R: Standard

NOTE: Chart not to scale.

(NARRATIVE ON FOLLOWING PAGE)

SW-1, 31 DEC 2020 to 28 JAN 2021

CONNR SEVEN DEPARTURE (RNAV)
(CONNR7.CONNR) 26MAR20

DENVER, COLORADO
DENVER INTL (DEN)