

WAAS CH <b>69233</b> <b>W02A</b>	APP CRS <b>021°</b>	Rwy Idg TDZE Apt Elev	<b>5927</b> <b>4967</b> <b>4970</b>
--	------------------------	-----------------------------	---

RNAV (GPS) RWY 2

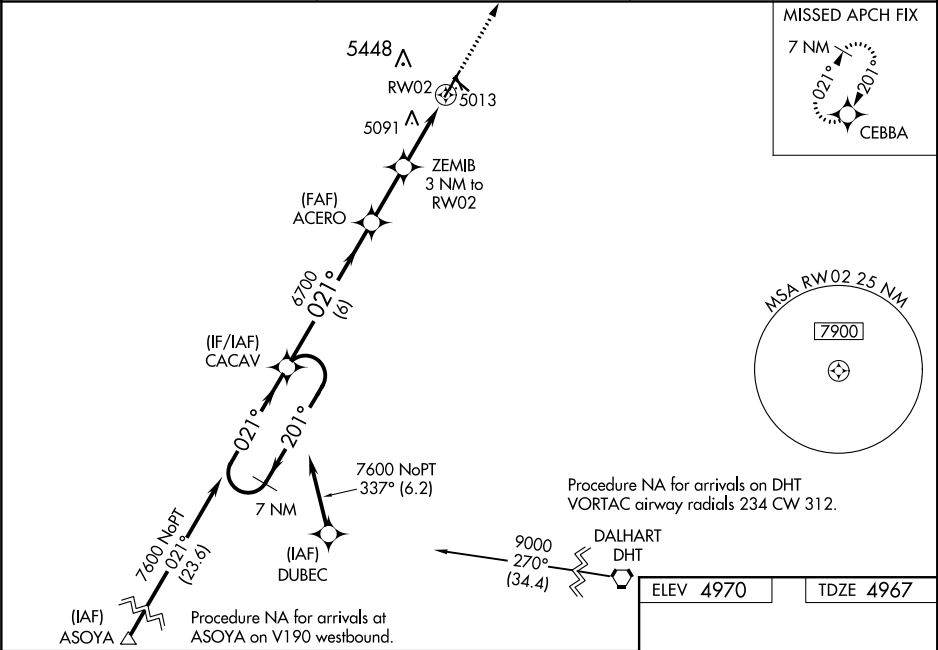
CLAYTON MUNI AIRPARK (CAO)

⚠

For uncompensated Baro-VNAV systems, LNAV/VNAV NA below -16°C (4°F) or above 54°C (130°F). Circling NA west of Rwy 2-20. DME/DME RNP-0.3 NA. When local altimeter setting not received, use Dalhart altimeter setting and increase all DA 227 feet and all MDA 240 feet, increase LPV all Cats visibility  $\frac{7}{8}$  mile, increase LNAV/VNAV all Cats visibility  $1\frac{1}{8}$  mile, increase LNAV Cat C visibility  $\frac{5}{8}$  mile, and increase Circling Cat C visibility  $\frac{1}{4}$  mile. Baro-VNAV NA when using Dalhart altimeter setting. VDP NA with Dalhart altimeter setting.

MISSED APPROACH: Climb to 8000 direct CEBBA and hold, continue climb-in-hold to 8000.

ASOS <b>120.625</b>	ALBUQUERQUE CENTER <b>127.85 285.475</b>	UNICOM <b>122.8 (CTAF) 0</b>
------------------------	---	---------------------------------



7 NM Holding Pattern CACAV				
GP 3.00° TCH 49				
6700 ← 201° → 021° → 021° → 6700				
ACERO 6700 ZEMIB 3 NM to RW02 *1.1 NM to RW02 *5960				
6 NM → 2.3 NM → 1.9 NM → 1.1 NM				
CATEGORY	A	B	C	D
LPV DA	5217- $\frac{3}{4}$ 250 (300- $\frac{3}{4}$ )			NA
LNAV/VNAV DA	5367- $1\frac{3}{8}$ 400 (400- $1\frac{3}{8}$ )			NA
LNAV MDA	5360-1	393 (400-1)	5360- $1\frac{1}{8}$ 393 (400- $1\frac{1}{8}$ )	NA
CIRCLING	5360-1 390 (400-1)	5420-1 450 (500-1)	5420- $1\frac{1}{2}$ 450 (500- $1\frac{1}{2}$ )	NA

