

WAAS CH 86834 W29A	APP CRS 293°	Rwy Idg TDZE 5047 Apt Elev 5055
--	------------------------	---

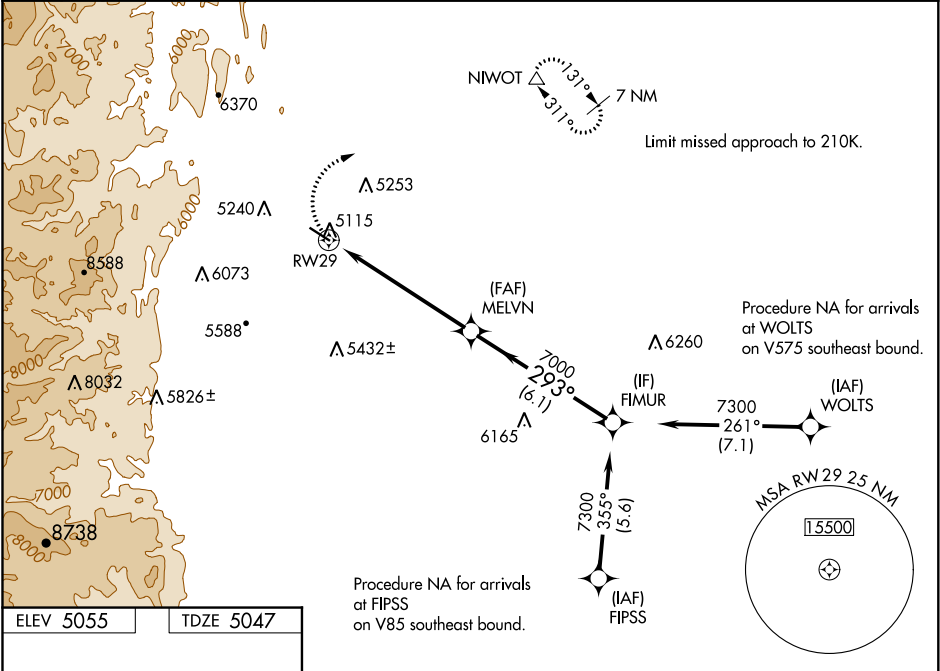
RNAV (GPS) RWY 29

VANCE BRAND (LMO)

⚠ Baro-VNAV NA when using Denver Intl altimeter setting. For uncompensated Baro-VNAV systems, LNAV/VNAV NA below -25°C (-13°F) or above 52°C (127°F). DME/DME RNP-0.3 NA. When local altimeter setting not received, use Denver Intl altimeter setting and increase all DA and MDA 120 feet, increase LPV all Cats visibility 3/8 mile, LNAV/VNAV all Cats visibility 1/2 mile, LNAV Cat A and Circling Cat A and C visibility 1/4 mile.

MISSED APPROACH: Climbing right turn to 7400 direct NIWOT and hold, continue climb-in-hold to 7400.

AWOS-3 120.0	DENVER APP CON 126.1 360.75	UNICOM 122.975 (CTAF) 0
------------------------	---------------------------------------	-----------------------------------



	7400 NIWOT			
	*LNAV Only. *2.3 NM to RWY 29			
	GP 3.00° TCH 35			
	CATEGORY	A	B	C
	LPV DA	5338-1 291 (300-1)		
MIRL Rwy 11-29	LNAV/ VNAV DA	5387-1 340 (400-1 1/8)		
	LNAV MDA	5800-1 753 (800-1)	5800-1 753 (800-1 1/4)	5800-2 753 (800-2 1/2)
	CIRCLING	5800-1 745 (800-1)	5800-1 745 (800-1 1/4)	5860-2 805 (900-2 1/2)
				6480-3 1425 (1500-3)

VANCE BRAND (LMO)

RNAV (GPS) RWY 29

SW-1, 31 DEC 2020 to 28 JAN 2021

SW-1, 31 DEC 2020 to 28 JAN 2021