

| | | |
|--|------------------------|---|
| WAAS CH 56339 W04A | APP CRS 035° | Rwy Idg 7398 TDZE 5837 Apt Elev 5837 |
|--|------------------------|---|

RNAV (GPS) RWY 4

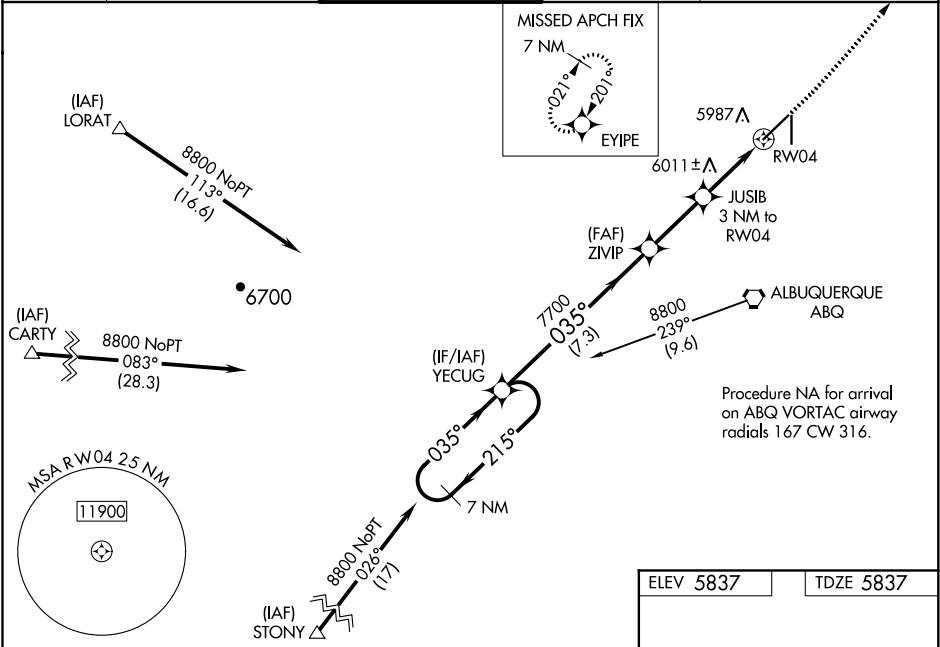
DOUBLE EAGLE II (A/E/G)

⚠

DME/DME RNP-0.3 NA. When local altimeter setting not received, use Albuquerque Intl Sunport altimeter setting and increase LPV DA to 6131 feet and LNAV/VNAV DA to 6384 feet, increase all MDA 100 feet, and increase LPV all Cats visibility ½ mile, LNAV/VNAV all Cats visibility ¾ mile, LNAV visibility Cat C/D ½ mile, and Circling visibility Cats C/D ½ mile. Baro-VNAV and VDP NA when using Albuquerque Intl Sunport altimeter setting. For uncompensated Baro-VNAV systems, LNAV/VNAV NA below -26°C (-14°F) or above 46°C (114°F).

MISSED APPROACH: Climb to 6300 then climbing left turn to 8600 direct EYIPE and hold.

| | | | | |
|----------------------------|---|---|---------------------------|---|
| AWOS-3PT 119.025 | ALBUQUERQUE APP CON 127.4 253.5 | DOUBLE EAGLE II TOWER ★ 120.15 (CTAF) 0 | GND CON 121.625 | CLNC DEL 124.8 (When twr closed) |
|----------------------------|---|---|---------------------------|---|



| | | | | | | | | | |
|----------------------|---------|-------------|--------------|--------|--------------|--------------------|--|--------------|--|
| 7 NM Holding Pattern | | YECUG | | ZIVIP | | JUSIB 3 NM to RW04 | | RW04 | |
| 8800 | | 215° | | 035° | | 7700 | | *6840 | |
| GP 3.00° TCH 55 | | 7.3 NM | | 2.7 NM | | 1.7 NM | | 1.3 NM | |
| CATEGORY | A | B | C | D | | | | | |
| LPV DA | 6037-¾ | | 200 (200-¾) | | | | | | |
| LNAV/VNAV DA | 6290-1½ | | 453 (500-1½) | | | | | | |
| LNAV MDA | 6300-1 | 463 (500-1) | 6300-1¾ | | 463 (500-1¾) | | | | |
| CIRCLING | 6400-1 | 563 (600-1) | 6420-1½ | | 583 (600-1½) | 6640-2½ | | 803 (900-2½) | |

ELEV 5837

TDZE 5837

7398 X 100

35

0.4% UP

5883

TWR 5922

AS

001 X 100

35

REIL Rwy 17 and 35 0

MIRL Rwy 4-22 and 17-35 0